



EMC TEST REPORT For RCM

Test Report No. : KES-E1-17T0813
Date of Issue : Dec. 11, 2017
Product name : Network Camera
Model/Type No. : XNP-6320P
Variant Model : -
Applicant : Hanwha Techwin Co., Ltd.
Applicant Address : 1204, Changwon-daero, Seongsan-gu Changwon-si,
Gyeongsangnam-do, Korea
Manufacturer : Hanwha Techwin (Tianjin) Co.,Ltd.
Manufacturer Address : No.11 Weiliu Rd, Micro-Electronic Industrial
Park, TEDA, Tianjin, 300385, People's Republic of China.
Date of Receipt : Nov. 22, 2017
Test date : Dec. 04, 2017 ~ Dec. 05, 2017
Test Results : **In Compliance** **Not in Compliance**

Tested by

Ju Won, Yun
EMC Test Engineer

Reviewed by

Dong-Hun, Jang
EMC Technical Manager

This test report is not related to KOLAS.



REPORT REVISION HISTORY

Date	Test Report No.	Revision History
Dec. 11, 2017	KES-E1-17T0813	Issued

This report shall not be reproduced except in full, without the written approval of KES Co., Ltd. This document Jun be altered or revised by KES Co., Ltd. personnel only, and shall be noted in the revision section of the document. Any alteration of this document not carried out by KES Co., Ltd. will constitute fraud and shall nullify the document.

This report shall not be reproduced except in full, without the written approval of KES Co., Ltd.
The results shown in this test report refer only to the sample(s) tested unless otherwise stated.



TABLE OF CONTENTS

1.0	General Product Description.....	4
1.1	Test Voltage & Frequency	7
1.2	Variant Model Differences	7
1.3	Device Modifications	7
1.4	Equipment Under Test.....	7
1.5	Support Equipments	8
1.6	External I/O Cabling	9
1.7	EUT Operating Mode(s)	10
1.8	Configuration.....	11
1.9	Calibration Details of Equipment Used for Measurement	12
1.10	Test Facility	12
1.11	Laboratory Accreditations and Listings	12
2.0	Test Regulations.....	13
2.1	Conducted Emissions at Mains Power Ports	15
2.2	Conducted Emissions at Telecommunication Ports.....	16
2.3	Radiated Electric Field Emissions(Below 1 GHz)	17
2.4	Radiated Electric Field Emissions(Above 1 GHz)	18
APPENDIX A – TEST DATA.....		19
	Conducted Emissions at Mains Power Ports.....	19
	Conducted Emissions at Telecommunication Ports	21
	Radiated Electric Field Emissions(Below 1 GHz)	25
	Radiated Electric Field Emissions(Above 1 GHz)	27
	Test Setup Photos and Configuration	35
	Conducted Voltage Emissions	35
	Conducted Telecommunication Emissions	36
	Radiated Electric Field Emissions(Below 1 GHz)	37
	Radiated Electric Field Emissions(Above 1 GHz)	38
	EUT External Photographs.....	39
	EUT Internal Photographs	40



1.0 General Product Description

Main Specifications of EUT are:

Video	XNP-6320	XNP-6320H
Imaging Device	1/2.8" 2.4M CMOS	
Total Pixels	1981(H) x 1288(V), 2.55M	
Effective Pixels	1944(H) x 1212(V), 2.35M	
Scanning System	Progressive	
Min. Illumination	Color : 0.05Lux (1/30sec, F1.6) B/W : 0.005 Lux (1/30sec, F1.6)	
S / N Ratio	50dB	
Video Out	CVBS : 1.0 Vp-p / 75Ω composite, 720x480(N), 720x576(P), for installation USB : Micro USB type B, 1280x720, for installation	
Lens		
Focal Length (Zoom Ratio)	4.44 ~ 142.6mm(Optical 32X)	
Max. Aperture Ratio	F1.6 (Wide) / F4.4 (Tele)	
Angular Field of View	H : 61.8°(Wide) ~ 2.19°(Tele) / V : 36.2°(Wide) ~ 1.24°(Tele)	
Min. Object Distance	Wide 1.5m ,Tele 2m	
Focus Control	Auto / Manual / One shot AF	
Lens Type	DC Auto Iris	
Mount Type	Board-in type	
Pan/Tilt/Rotate		
Pan Range	360° Endless	
Pan Speed	Preset : 700°/sec, Manual : 0.024°/sec ~ 200°/sec	
Tilt Range	210°(-15° ~195°)	
Tilt Speed	Preset : 700°/sec, Manual : 0.024°/sec ~200°/sec	
Sequence	Preset (300 ea), Swing, Group (6 ea), Trace, Tour (1 ea), Auto Run, Schedule	
Preset Accuracy	±0.2°	
Azimuth	Yes (E/W/S/N/NE/NW/SE/SW)	
Auto Tracking	Support	
Operational		
Camera Title	Off / On (Displayed up to 85 characters) - W/W : English/Numeric/Special Characters - China : English/Numeric/Special/Chinese Characters - Common : Multi-line (Max 5), Color (Grey/Green/Red/Blue/Black/White), Transparency, Auto Scale by Resolution	
Day & Night	Auto (ICR) / Color / B/W / Schedule	
Backlight Compensation	Off / BLC / HLC / WDR	
Wide Dynamic Range	150dB	
Contrast Enhancement	SSDR (Off / On)	
Digital Noise Reduction	SSNR5 (2D+3D Noise Filter) (Off / On)	
Digital Image Stabilization	Off / On (built-in Gyro)	
Defog	Auto/Manual/Off	
Motion Detection	Off / On(8ea, Polygonal)	
Privacy Masking	Off / On (24 Zones of Rectangle zone) - Color : Grey/Green/Red/Blue/Black/White - Zoom ratio option for mask mode - Mosaic option	

This report shall not be reproduced except in full, without the written approval of KES Co., Ltd.
The results shown in this test report refer only to the sample(s) tested unless otherwise stated.



KES Co., Ltd.

C-3701, Simin-daero 365-40,
 Dongan-gu, Anyang-si, Gyeonggi-do, 14057, Korea
 Tel: +82-31-425-6200 / Fax: +82-31-424-0450
 www.kes.co.kr

Test report No.:
 KES-E1-17T0813
 Page (5) of (48)

Gain Control	Off / Low / Middle / High
White Balance	ATW / AWC / Manual / Indoor / Outdoor (included Mercury & Sodium)
Electronic Shutter Speed	Minimum / Maximum / Anti flicker (1 ~ 1/12,000sec)
Digital Zoom	32x
Image Rotation	Flip/Mirror : On/Off
Video&Audio Analytics	Tampering, Loitering, Directional Detection, Fog Detection, Virtual Line, Enter/Exit, Appear / Disappear, Audio Detection, Face Detection, Motion Detection, Sound Classification
Serial Interface	RS-485 - Samsung-T, Pelco-D/P, Panasonic, Bosch, AD, GE, Vicon, Honeywell
Alarm I/O	Input 4ea / Output 2ea (Relay)
Alarm Triggers	Alarm Input, Motion Detection, Video & Audio Analytics, Network Disconnect
Alarm events	File upload via FTP and E-Mail Notification via E-Mail, TCP and HTTP local storage(SD/SDHC/SDXC) or NAS recording at Alarm Triggers External output Preset
Audio In	Selectable (Mic IN/Line IN) Supply voltage: 2.5VDC(4mA), Input impedance: approx. 2K Ohm
Audio out	Line out (3.5mm mono jack), Max output level: 1 Vrms
Pixel counter	support
Network	
Ethernet	RJ-45 (10/100BASE-T)
Video Compression Format	H.264 (MPEG-4 Part 10/AVC), H.265, Motion JPEG
Resolution	1920x1080, 1280x1024, 1280x960, 1280x720, 1024x768, 800x600, 800x448, 720x576, 720x480, 640x480, 640x360, 320x240
Max. Framerate	H.264/H.265 : Max 60fps at all resolutions Motion JPEG : Max. 30fps at all resolutions
Smart Codec	Manual mode (Area-Based : 5ea)
WiseStream-II	support
Video Quality Adjustment	H.264 / H.265 / MJPEG : Target Bitrate Level Control
Bitrate Control Method	H.264 / H.265 : CBR or VBR Motion JPEG : VBR
Streaming Capability	Multiple Streaming (Up to 10 Profiles)
Audio Compression Format	G.711 u-law /G.726 Selectable G.726 (ADPCM) 8KHz, G.711 8KHz G.726 : 16Kbps, 24Kbps, 32Kbps, 40Kbps AAC-LC : 48Kbps at 16KHz

This report shall not be reproduced except in full, without the written approval of KES Co., Ltd.
 The results shown in this test report refer only to the sample(s) tested unless otherwise stated.



KES Co., Ltd.

C-3701, Simin-daero 365-40,
 Dongan-gu, Anyang-si, Gyeonggi-do, 14057, Korea
 Tel: +82-31-425-6200 / Fax: +82-31-424-0450
 www.kes.co.kr

Test report No.:
 KES-E1-17T0813
 Page (6) of (48)

Audio Communication	Bi-directional (2-Way)	
IP	IPv4, IPv6	
Protocol	TCP/IP, UDP/IP, RTP(UDP), RTP(TCP), RTCP,RTSP, NTP, HTTP, HTTPS, SSL/TLS, DHCP, PPPoE, FTP, SMTP, ICMP, IGMP, SNMPv1/v2c/v3(MIB-2), ARP, DNS, DDNS, QoS, PIM-SM, UPnP, Bonjour	
Security	HTTPS(SSL) Login Authentication Digest Login Authentication IP Address Filtering User access Log 802.1X Authentication (EAP-TLS, EAP-LEAP)	
Streaming Method	Unicast / Multicast	
Max. User Access	20 users at Unicast Mode	
Edge Storage	Micro SD/SDHC/SDXC 2slot (up to 512 GB) - Continuous recording(1'st slot to 2'nd slot) - Motion Images recorded in the Micro SD/SDHC/SDXC memory card can be downloaded. NAS(Network Attached Storage) Local PC for Instant Recording	
Application Programming	ONVIF Profile S/G SUNAPI 2.0(HTTP API) Wisenet Open Platform	
Webpage Language	English, Korean, Chinese, French, Italian, Spanish, German, Japanese, Russian, Swedish, Portuguese, Czech, Polish, Turkish, Dutch, Hungarian, Greek	
Web Viewer	Supported OS : Windows 7, 8.1, 10, Mac OS X 10.10, 10.11, 10.12 Plug-in Free Webviewer Supported Browser : Google Chrome, MS Edge, Mozilla Firefox(Window 64bit only) , Apple Safari 10 (Mac OS X only) Plug-in Webviewer Supported Browser : MS Explore 11, Apple Safari 10 (Mac OS X only)	
Central Management Software	SmartViewer	
Environmental		
Operating Temperature / Humidity	-10°C ~ +55°C(+14°F ~ +131°F) / Less than 90% RH	24V AC: -50°C ~ +55°C (-58°F ~ +131°F) / ~ 90% RH PoE+ : -35°C ~ +55°C (-31°F ~ +131°F) / ~ 90% RH * Start up should be done at above -30°C
Storage Temperature / Ingress Protection	-30°C ~ +60°C (-22°F ~ +140°F) / Less than 90% RH	
Vandal Resistance	IK10 (with SHP-3701H)	IP66 IK10
Electrical		
Input Voltage / Current	AC24V±10%,PoE+(IEEE802.3at,Class4)	
Power Consumption	20W	24W Max(Heater Off), 65W Max(Heater On, AC24V)
Mechanical		
Color / Material	Ivory / Plastic+Metal	
Dimension (WxH)	Ø152 x H218 mm	Ø220 x H293.6 mm
Weight	1.7Kg	3.3Kg

This report shall not be reproduced except in full, without the written approval of KES Co., Ltd.
 The results shown in this test report refer only to the sample(s) tested unless otherwise stated.



1.1 Test Voltage & Frequency

Unless indicated otherwise on the individual data sheet or test results, the test voltage and frequency was as indicated below.

Voltage 240 Vac 100 Vac 24 Vac 12 Vdc PoE

Frequency 50 Hz 60 Hz Hz

1.2 Variant Model Differences

Not applicable

1.3 Device Modifications

Not applicable

1.4 Equipment Under Test

Description	Model Number	Serial Number	Manufacturer	Remarks
Network Camera	XNP-6320P	-	Hanwha Techwin (Tianjin) Co.,Ltd	E.U.T

This report shall not be reproduced except in full, without the written approval of KES Co., Ltd.
The results shown in this test report refer only to the sample(s) tested unless otherwise stated.



1.5 Support Equipments

Description	Model Number	Serial Number	Manufacturer	Remarks
PoE Adaptor	GS728TPP	-	NETGEAR, INC.	-
Notebook	X56K	HN11N5151FJ0045W	Hansung computer co., Ltd.	-
Notebook Adaptor	PA-1900-14	-	LITE-ON TECHNOLOGY (CHANGZHOU)CO., LTD.	-
Speaker	BR10000A CUVE	-	BEIJING EDIFIER HI-TECH GROUP.	-
MIC	CMK-303	-	CAMAC	-
Alarm	SIP-1201DD D0	-	SAMSUNG TECHWIN CO., LTD.	-
Controller	SPC-1010	C50E67WG10100F	SamSung Techwin Co.,Ltd.	-
Controller Adaptor	RS-AB1000	-	Dongguan Jinhua sheng Power Technology Co.,Ltd.	-
Micro SD Card	-	-	SanDisk	32 GB

This report shall not be reproduced except in full, without the written approval of KES Co., Ltd.
The results shown in this test report refer only to the sample(s) tested unless otherwise stated.

1.6 External I/O Cabling

■ AC 24 V Mode

Start		END		Cable Spec.	
Description	I/O Port	Description	I/O Port	Length	Shield
Network Camera (E.U.T)	RJ-45	Notebook	RJ-45	3.0	U
	3.5 mm	Speaker	3.5 mm	1.6	U
	3.5 mm	MIC	3.5 mm	1.7	U
	3 Pin	Alarm	3 Pin	4.0	U
	RS-485 (3 Pin)	Controller	RS-485 (3 Pin)	3.5	U
	SLOT	Micro SD Card	SLOT	-	-

* Unshielded=U, Shielded=S

■ PoE Mode

Start		END		Cable Spec.	
Description	I/O Port	Description	I/O Port	Length	Shield
Network Camera (E.U.T)	RJ-45 (PoE)	PoE Adaptor	RJ-45 (PoE)	3.0	U
	3.5 mm	Speaker	3.5 mm	1.6	U
	3.5 mm	MIC	3.5 mm	1.7	U
	3 Pin	Alarm	3 Pin	4.0	U
	RS-485 (3 Pin)	Controller	RS-485 (3 Pin)	3.5	U
	SLOT	Micro SD Card	SLOT	-	-
PoE Adaptor	RJ-45 (Data)	Notebook	RJ-45 (Data)	3.0	U

* Unshielded=U, Shielded=S



KES Co., Ltd.

C-3701, Simin-daero 365-40,
Dongan-gu, Anyang-si, Gyeonggi-do, 14057, Korea
Tel: +82-31-425-6200 / Fax: +82-31-424-0450
www.kes.co.kr

Test report No.:
KES-E1-17T0813
Page (10) of (48)

1.7 EUT Operating Mode(s)

Test mode	operating
AC 24 V	E.U.T Monitoring, Ping Test
PoE	

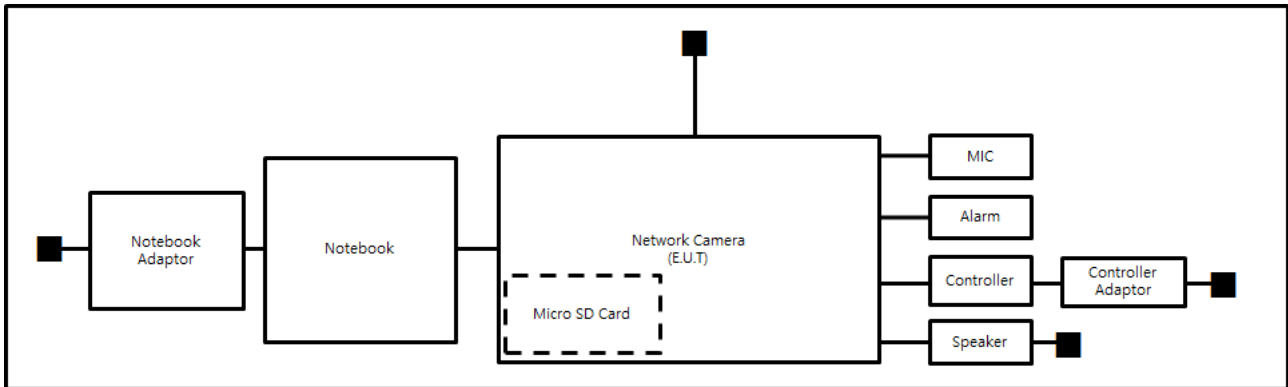
E.U.T Test operating S/W		
Name	Version	Manufacture Company
Webviewer	-	Hanwha Techwin Co., Ltd.

This report shall not be reproduced except in full, without the written approval of KES Co., Ltd.
The results shown in this test report refer only to the sample(s) tested unless otherwise stated.

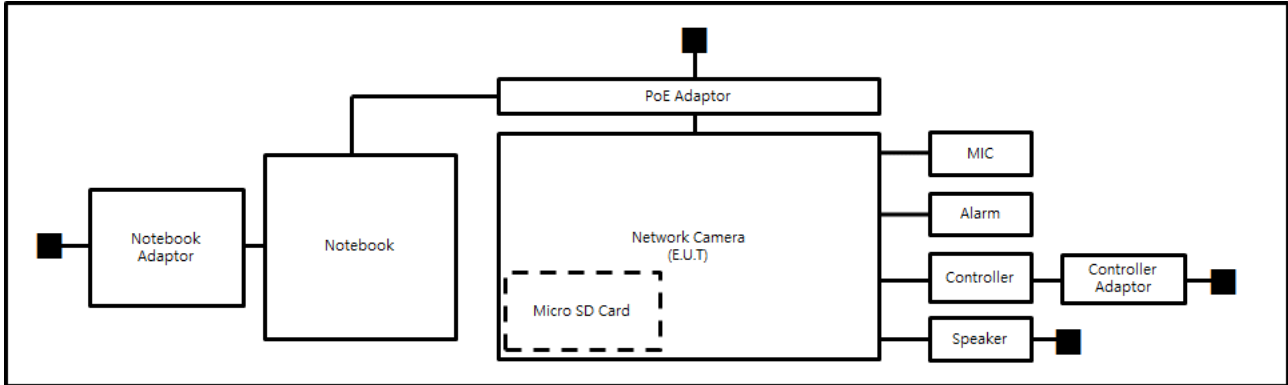
1.8 Configuration

■ AC Main
 □ DC Main

■ AC 24 V Mode



■ PoE Mode



This report shall not be reproduced except in full, without the written approval of KES Co., Ltd.
 The results shown in this test report refer only to the sample(s) tested unless otherwise stated.







1.9 Calibration Details of Equipment Used for Measurement

Test equipment and test accessories are calibrated on regular basis. The maximum time between calibrations is one year or what is recommended by the manufacturer, whichever is less.

1.10 Test Facility

The measurement facility is located at 473-21 Gayeo-ro, Yeosu-si, Gyeonggi-do, 12658, Korea. The sites are constructed in conformance with the requirements of ANSI C63.4 and CISPR Publication 22.

1.11 Laboratory Accreditations and Listings

Country	Agency	Scope of Accreditation	Logo
USA	FCC	3 & 10 meter Open Area Test Sites and one conducted site to perform FCC Part 15/18 measurements.	
JAPAN	VCCI	Mains Ports Conducted Interference Measurement, Telecommunication Ports Conducted Disturbance Measurement and Radiation 10 meter site, Facility for measuring radiated disturbance above 1 GHz	 R-4308, C-4798, T-2311, G-914
KOREA	MSIP	EMI (10 meter Open Area Test Site and two conducted sites) Radio(3 & 10 meter Open Area Test Sites and one conducted site) EMS (ESD, RS, EFT/Burst, Surge, CS, Magnetic, Dips and interruptions)	 KR0100
Canada	IC	3 & 10 meter Open Area Test Sites and one conducted site	 4769B-1
Europe	CE	EMI (10 meter Open Area Test Site and two conducted sites) Radio(3 & 10 meter Open Area Test Sites and one conducted site) EMS (ESD, RS, EFT/Burst, Surge, CS, Magnetic, Dips and interruptions)	
International	KOLAS	EMI (10 meter Open Area Test Site and two conducted sites) Radio(3 & 10 meter Open Area Test Sites and one conducted site) EMS (ESD, RS, EFT/Burst, Surge, CS, Magnetic, Dips and interruptions)	

2.0 Test Regulations

The emissions tests were performed according to following regulations:

EMC – Directive 2014/30/EU

EN 61000-6-3:2011

EN 61000-6-1:2007

EN 61000-6-4:2007 +A1:2011

EN 61000-6-2:2005

EN 55011:2007 +A1:2010

Group 1
 Class A

Group 2
 Class B

EN 55014-1:2006 +A2:2011

EN 55014-2:1997 +A2:2008

EN 55015:2013

EN 55032:2015

Class A

Class B

EN 55024:2010

EN 50130-4:2011 +A1:2014

EN 61000-3-2:2014

EN 61000-3-3:2013

EN 61326-1:2013



-
- | | | |
|---|---|----------------------------------|
| <input type="checkbox"/> VCCI V-3 / 2015.04 | <input type="checkbox"/> Class A | <input type="checkbox"/> Class B |
| <input checked="" type="checkbox"/> AS/NZS CISPR22:2009 +A1:2010 | <input checked="" type="checkbox"/> Class A | <input type="checkbox"/> Class B |
| <input type="checkbox"/> 47 CFR Part 15, Subpart B | | |
| <input type="checkbox"/> CISPR 22:2009 +A1:2010 | <input type="checkbox"/> Class A | <input type="checkbox"/> Class B |
| <input type="checkbox"/> ANSI C63.4-2009 | | |
| <input type="checkbox"/> IC Regulation ICES-003 : 2016 | | |
| <input type="checkbox"/> CAN/CSA CISPR 22-10 | <input type="checkbox"/> Class A | <input type="checkbox"/> Class B |
| <input type="checkbox"/> ANSI C63.4-2014 | | |
|
 | | |
| <input type="checkbox"/> RE- Directive 2014/53/EU | | |
|
 | | |
| <input type="checkbox"/> EN 301 489-1 V1.9.2 | | |
| <input type="checkbox"/> Equipment for fixed use | | |
| <input type="checkbox"/> Equipment for vehicular use | | |
| <input type="checkbox"/> Equipment for portable use | | |
|
 | | |
| <input type="checkbox"/> EN 301 489-3 V1.6.1 | | |
|
 | | |
| <input type="checkbox"/> EN 301 489-17 V2.2.1 | | |
|
 | | |
| <input type="checkbox"/> EN 60945:2002 | | |

This report shall not be reproduced except in full, without the written approval of KES Co., Ltd.
The results shown in this test report refer only to the sample(s) tested unless otherwise stated.

2.1 Conducted Emissions at Mains Power Ports

Test Date

Dec. 04, 2017

Test Location

Electro wave Shieldroom

Test Equipment

Used	Description	Model Number	Manufacturer	Serial Number	Cal. Due
<input checked="" type="checkbox"/>	EMI Test S/W	EMC32	R & S	9.12.00	-
<input checked="" type="checkbox"/>	EMI TEST RECEIVER	ESR3	R & S	101781	04, 27, 2018
<input checked="" type="checkbox"/>	LISN	ENV216	R & S	101787	01, 11, 2018
<input checked="" type="checkbox"/>	LISN	ESH2-Z5	R & S	100450	04, 27, 2018
<input checked="" type="checkbox"/>	PULSE LIMITER	ESH3-Z2	R & S	101915	11, 27, 2018
<input type="checkbox"/>	LISN	NNBM8124	SCHWARZBECK	8124-1002	08, 07, 2018
<input type="checkbox"/>	LISN	NNBM8124	SCHWARZBECK	8124-1003	08, 07, 2018

Test Conditions

Temperature: 22,0 °C
Relative Humidity: 43,0 % R.H.

Frequency Range of Measurement

150 kHz to 30 MHz

Instrument Settings

IF Band Width: 9 kHz

Test Results

The requirements are:

- PASS
- NOT PASS
- NOT APPLICABLE

Remarks

See Appendix A for test data.

2.2 Conducted Emissions at Telecommunication Ports

Test Date

Dec. 04, 2017

Test Location

Electro wave Shieldroom

Test Equipment

Used	Description	Model Number	Manufacturer	Serial Number	Cal. Due
<input checked="" type="checkbox"/>	EMI Test S/W	EMC32	R & S	9.12.00	-
<input checked="" type="checkbox"/>	EMI TEST RECEIVER	ESR3	R & S	101781	04, 27, 2018
<input checked="" type="checkbox"/>	LISN	ENV216	R & S	101787	01, 11, 2018
<input checked="" type="checkbox"/>	LISN	ESH2-Z5	R & S	100450	04, 27, 2018
<input checked="" type="checkbox"/>	PULSE LIMITER	ESH3-Z2	R & S	101915	11, 27, 2018
<input checked="" type="checkbox"/>	8-WIRE ISN CAT3,5	ENY81	R & S	100174	01, 11, 2018
<input type="checkbox"/>	8-WIRE ISN CAT6	ENY81-CAT6	R & S	101665	01, 11, 2018
<input type="checkbox"/>	ISN	ISN S8	SCHWARZBECK	ISN-S8-0019	05, 12, 2018
<input type="checkbox"/>	CDN	CDNS502A	TESEQ	40431	01, 11, 2018

Test Conditions

Temperature: 22,0 °C
Relative Humidity: 41,3 % R.H.

Frequency Range of Measurement

150 kHz to 30 MHz

Instrument Settings

IF Band Width: 9 kHz

Test Results

The requirements are:

- PASS
 NOT PASS
 NOT APPLICABLE

Remarks

See Appendix A for test data.

2.3 Radiated Electric Field Emissions(Below 1 GHz)

Test Date

Dec. 04, 2017

Test Location OPEN AREA TEST SITE #2 SAC #4(10 m)**Test Equipment**

Used	Description	Model Number	Manufacturer	Serial Number	Cal. Due
<input checked="" type="checkbox"/>	EMI Test S/W	EP5/RE	TOYO Corporation	6.0.0	-
<input checked="" type="checkbox"/>	EMI TEST RECEIVER	ESU26	R & S	100551	04, 18, 2018
<input checked="" type="checkbox"/>	AMPLIFIER	SCU 01	R & S	100603	11, 27, 2018
<input checked="" type="checkbox"/>	TRILOG-BROADBAND ANTENNA	VULB9163	Schwarzbeck	716	11, 28, 2018

Test ConditionsTemperature: 22,7 °C
Relative Humidity: 41,3 % R.H.**Frequency Range of Measurement**

30 MHz to 1 GHz

Instrument Settings

IF Band Width: 120 kHz

Test Results

The requirements are:

- PASS
 NOT PASS
 NOT APPLICABLE

RemarksSee Appendix A for test data.

2.4 Radiated Electric Field Emissions(Above 1 GHz)

Test Date

Dec. 05, 2017

Test Location

SEMI ANECHOIC CHAMBER #2

Test Equipment

Used	Description	Model Number	Manufacturer	Serial Number	Cal. Due
<input checked="" type="checkbox"/>	EMI Test S/W	e3	AUDIX	8.083b	-
<input checked="" type="checkbox"/>	EMI TEST RECEIVER	ESU26	R & S	100552	04, 19, 2018
<input checked="" type="checkbox"/>	PREAMPLIFIER	8449B	AGILENT	3008A01729	05, 31, 2018
<input type="checkbox"/>	ATTENUATOR	8491A	HP	35496	03, 24, 2018
<input type="checkbox"/>	LOG-PERIODIC ANTENNA	STLP 9149	SCHWARZBECK	9149-255	05, 17, 2018
<input checked="" type="checkbox"/>	HORN ANTENNA	BBHA 9120D	SCHWARZBECK	9120D-1802	09, 04, 2019

Test ConditionsTemperature: 20,5 °C
Relative Humidity: 45,2 % R.H.**Frequency Range of Measurement**

1 GHz to 6 GHz

Instrument Settings

IF Band Width: 1 MHz

Test Results

The requirements are:

- PASS
 NOT PASS
 NOT APPLICABLE

RemarksSee Appendix A for test data.

APPENDIX A – TEST DATA

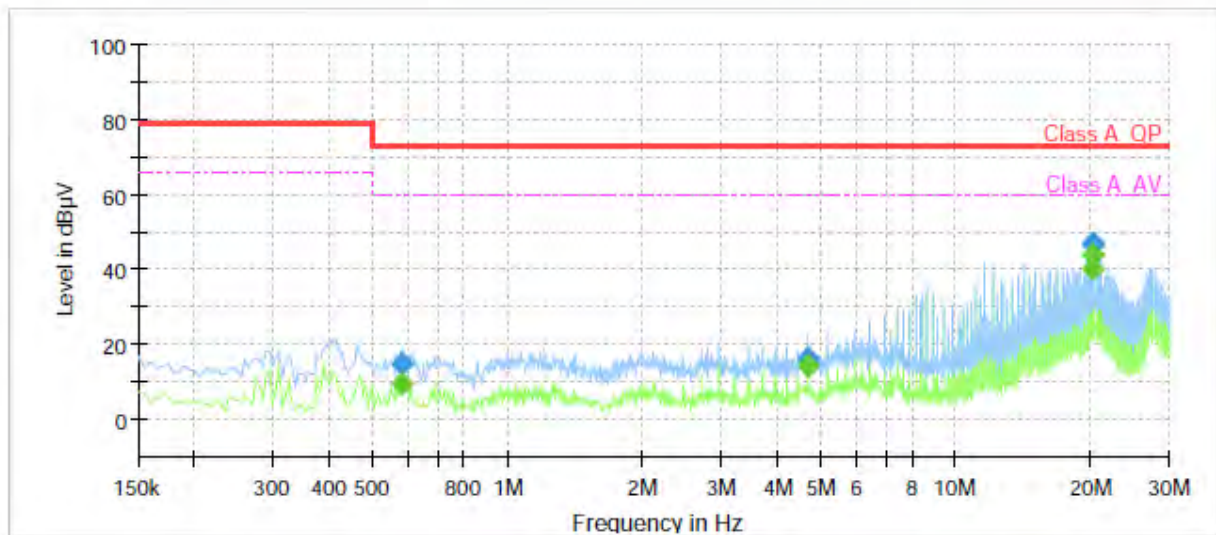
Conducted Emissions at Mains Power Ports

■ AC 24 V Mode

HOT LINE

Common Information

Test Description:	Conducted Emission
Model No.:	XNP-6320P
Mode	AC_H
Operator Name:	KES



Final Result

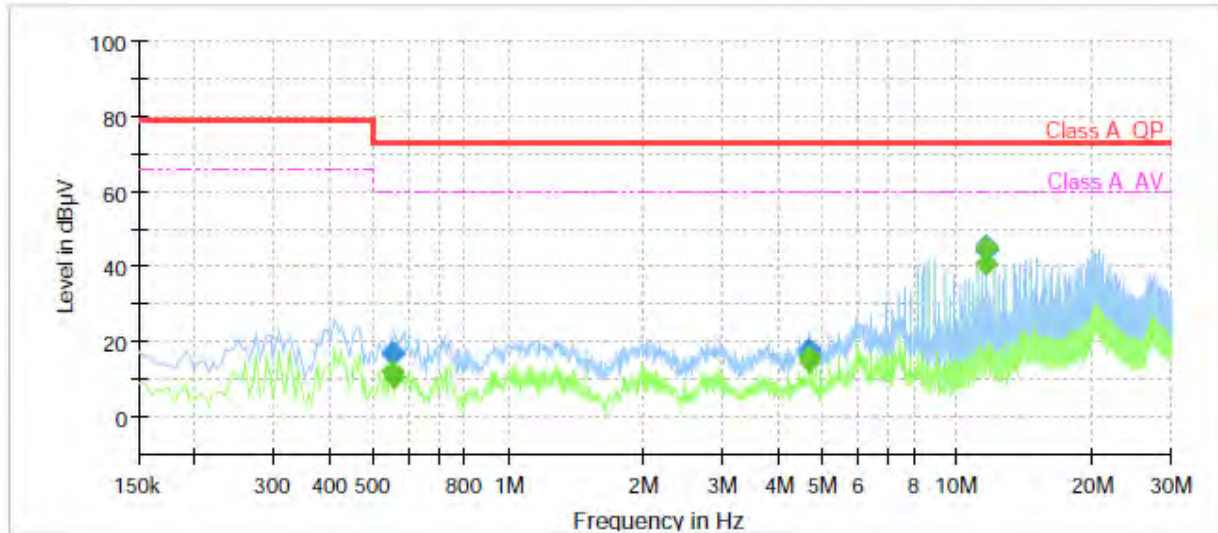
Frequency (MHz)	QuasiPeak (dBµV)	CAverage (dBµV)	Limit (dBµV)	Margin (dB)	Meas. Time (ms)	Bandwidth (kHz)	Line	Corr. (dB)
0.580000	---	9.58	60.00	50.42	1000.0	9.000	L1	19.8
0.580000	15.00	---	73.00	58.00	1000.0	9.000	L1	19.8
4.695000	---	14.19	60.00	45.81	1000.0	9.000	L1	19.8
4.695000	16.21	---	73.00	56.79	1000.0	9.000	L1	19.8
20.265000	---	40.24	60.00	19.76	1000.0	9.000	L1	20.4
20.265000	46.64	---	73.00	26.36	1000.0	9.000	L1	20.4
20.270000	---	43.90	60.00	16.10	1000.0	9.000	L1	20.4
20.270000	47.19	---	73.00	25.81	1000.0	9.000	L1	20.4

This report shall not be reproduced except in full, without the written approval of KES Co., Ltd.
The results shown in this test report refer only to the sample(s) tested unless otherwise stated.

NEUTRAL LINE

Common Information

Test Description:	Conducted Emission
Model No.:	XNP-6320P
Mode	AC_N
Operator Name:	KES



Final Result

Frequency (MHz)	QuasiPeak (dBµV)	CAverage (dBµV)	Limit (dBµV)	Margin (dB)	Meas. Time (ms)	Bandwidth (kHz)	Line	Corr. (dB)
0.550000	---	11.97	60.00	48.03	1000.0	9.000	N	19.8
0.550000	17.05	---	73.00	55.95	1000.0	9.000	N	19.8
0.555000	---	10.65	60.00	49.35	1000.0	9.000	N	19.8
0.555000	17.04	---	73.00	55.96	1000.0	9.000	N	19.8
4.695000	---	15.79	60.00	44.21	1000.0	9.000	N	19.8
4.695000	17.98	---	73.00	55.02	1000.0	9.000	N	19.8
4.700000	---	14.64	60.00	45.36	1000.0	9.000	N	19.8
4.700000	17.28	---	73.00	55.72	1000.0	9.000	N	19.8
11.615000	---	40.97	60.00	19.03	1000.0	9.000	N	20.2
11.615000	44.23	---	73.00	28.77	1000.0	9.000	N	20.2
11.620000	---	44.97	60.00	15.03	1000.0	9.000	N	20.2
11.620000	45.43	---	73.00	27.57	1000.0	9.000	N	20.2

◆ Calculation

QuasiPeak [dBµV] / CAverage [dBµV] = Reading Value [dBµV] + Corr. [dB]

QuasiPeak / CAverage : The Final Value

Reading Value : Not shown in the table.

Corr. : Correction values (LISN FACTOR + (Cable Loss + Pulse Limiter FACTOR))

This report shall not be reproduced except in full, without the written approval of KES Co., Ltd.
The results shown in this test report refer only to the sample(s) tested unless otherwise stated.

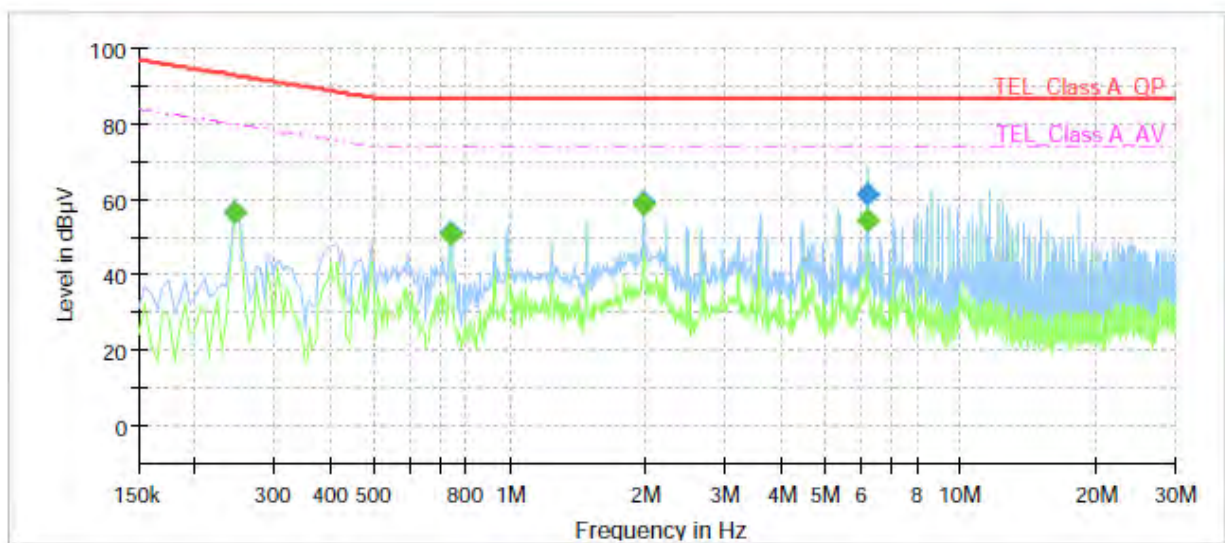
Conducted Emissions at Telecommunication Ports

■ AC 24 V Mode

[10 Mbps]

Common Information

Test Description:	Telecommunication Emission
Model No.:	XNP-6320P
Mode	AC_10 Mbps
Operator Name:	KES



Final Result

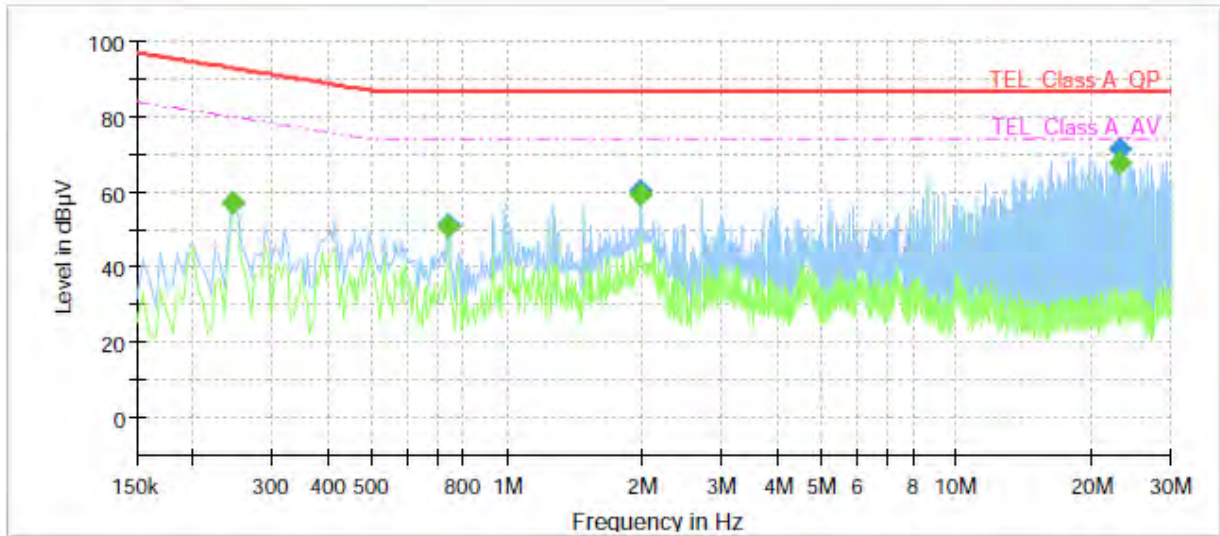
Frequency (MHz)	QuasiPeak (dBµV)	CAverage (dBµV)	Limit (dBµV)	Margin (dB)	Meas. Time (ms)	Bandwidth (kHz)	Line	Corr. (dB)
0.245000	---	56.76	79.92	23.16	1000.0	9.000	Single Line	19.6
0.245000	56.81	---	92.92	36.11	1000.0	9.000	Single Line	19.6
0.740000	---	50.70	74.00	23.30	1000.0	9.000	Single Line	19.8
0.740000	51.14	---	87.00	35.86	1000.0	9.000	Single Line	19.8
1.980000	---	58.71	74.00	15.29	1000.0	9.000	Single Line	20.0
1.980000	59.44	---	87.00	27.56	1000.0	9.000	Single Line	20.0
6.250000	---	54.63	74.00	19.37	1000.0	9.000	Single Line	19.4
6.250000	61.44	---	87.00	25.56	1000.0	9.000	Single Line	19.4

This report shall not be reproduced except in full, without the written approval of KES Co., Ltd.
The results shown in this test report refer only to the sample(s) tested unless otherwise stated.

[100 Mbps]

Common Information

Test Description:	Telecommunication Emission
Model No.:	XNP-6320P
Mode	AC_100 Mbps
Operator Name:	KES



Final Result

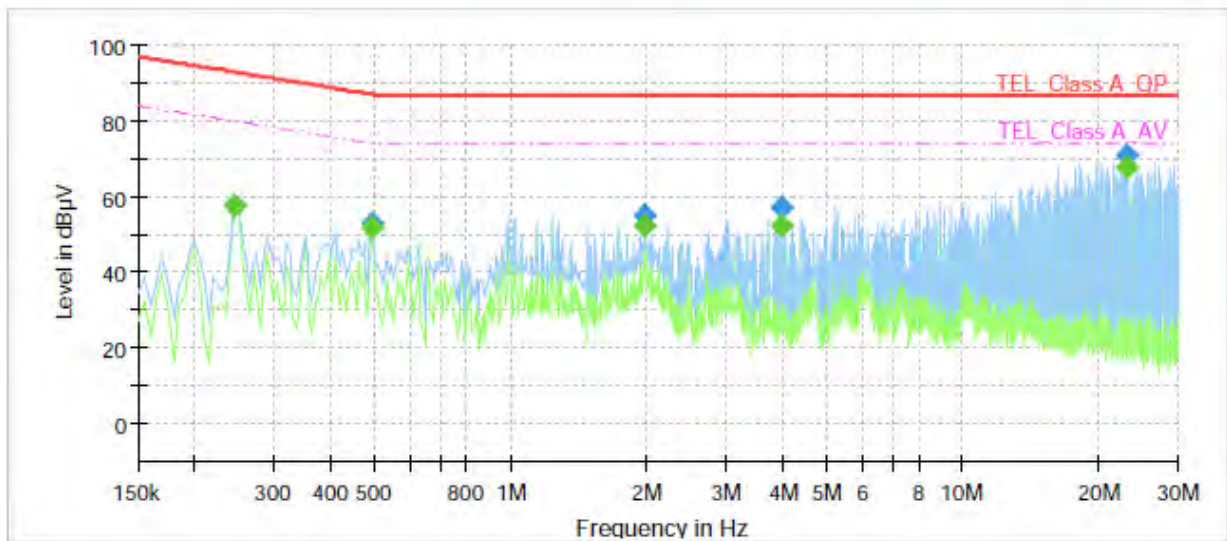
Frequency (MHz)	QuasiPeak (dBµV)	CAverage (dBµV)	Limit (dBµV)	Margin (dB)	Meas. Time (ms)	Bandwidth (kHz)	Line	Corr. (dB)
0.245000	---	57.06	79.92	22.86	1000.0	9.000	Single Line	19.9
0.245000	57.16	---	92.92	35.76	1000.0	9.000	Single Line	19.9
0.740000	---	50.59	74.00	23.41	1000.0	9.000	Single Line	20.1
0.740000	51.20	---	87.00	35.80	1000.0	9.000	Single Line	20.1
1.980000	---	59.47	74.00	14.53	1000.0	9.000	Single Line	20.3
1.980000	60.20	---	87.00	26.80	1000.0	9.000	Single Line	20.3
23.130000	---	67.65	74.00	6.35	1000.0	9.000	Single Line	20.6
23.130000	71.35	---	87.00	15.65	1000.0	9.000	Single Line	20.6

This report shall not be reproduced except in full, without the written approval of KES Co., Ltd.
The results shown in this test report refer only to the sample(s) tested unless otherwise stated.

■ PoE Mode
[10 Mbps]

Common Information

Test Description:	Telecommunication Emission
Model No.:	XNP-6320P
Mode	PoE_ 10 Mbps
Operator Name:	KES



Final Result

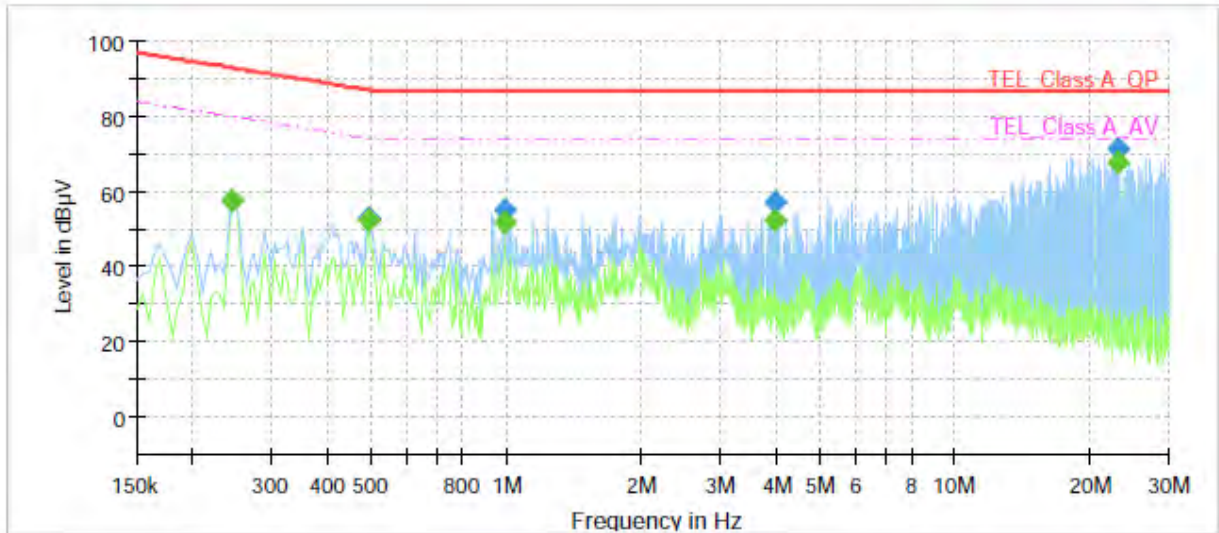
Frequency (MHz)	QuasiPeak (dBµV)	CAverage (dBµV)	Limit (dBµV)	Margin (dB)	Meas. Time (ms)	Bandwidth (kHz)	Line	Corr. (dB)
0.245000	---	57.47	79.92	22.45	1000.0	9.000	Single Line	19.6
0.245000	57.50	---	92.92	35.42	1000.0	9.000	Single Line	19.6
0.495000	---	52.02	74.08	22.06	1000.0	9.000	Single Line	19.7
0.495000	52.87	---	87.08	34.21	1000.0	9.000	Single Line	19.7
1.975000	---	52.43	74.00	21.57	1000.0	9.000	Single Line	20.0
1.975000	55.30	---	87.00	31.70	1000.0	9.000	Single Line	20.0
3.955000	---	52.27	74.00	21.73	1000.0	9.000	Single Line	19.7
3.955000	56.96	---	87.00	30.04	1000.0	9.000	Single Line	19.7
23.130000	---	67.77	74.00	6.23	1000.0	9.000	Single Line	20.4
23.130000	71.16	---	87.00	15.84	1000.0	9.000	Single Line	20.4

This report shall not be reproduced except in full, without the written approval of KES Co., Ltd.
The results shown in this test report refer only to the sample(s) tested unless otherwise stated.

[100 Mbps]

Common Information

Test Description:	Telecommunication Emission
Model No.:	XNP-6320P
Mode	PoE_ 100 Mbps
Operator Name:	KES



Final Result

Frequency (MHz)	QuasiPeak (dBµV)	CAverage (dBµV)	Limit (dBµV)	Margin (dB)	Meas. Time (ms)	Bandwidth (kHz)	Line	Corr. (dB)
0.245000	---	57.75	79.92	22.17	1000.0	9.000	Single Line	19.9
0.245000	57.80	---	92.92	35.12	1000.0	9.000	Single Line	19.9
0.495000	---	52.25	74.08	21.83	1000.0	9.000	Single Line	20.0
0.495000	53.19	---	87.08	33.89	1000.0	9.000	Single Line	20.0
0.990000	---	51.97	74.00	22.03	1000.0	9.000	Single Line	20.2
0.990000	55.21	---	87.00	31.79	1000.0	9.000	Single Line	20.2
3.955000	---	52.43	74.00	21.57	1000.0	9.000	Single Line	20.0
3.955000	57.15	---	87.00	29.85	1000.0	9.000	Single Line	20.0
23.130000	---	67.83	74.00	6.17	1000.0	9.000	Single Line	20.6
23.130000	71.51	---	87.00	15.49	1000.0	9.000	Single Line	20.6

◆ Calculation

QuasiPeak[dBuV] / CAverage [dBuV] = Reading Value[dBuV] + Corr. [dB]

QuasiPeak / CAverage : The Final Value

Reading Value : Not shown in the table.

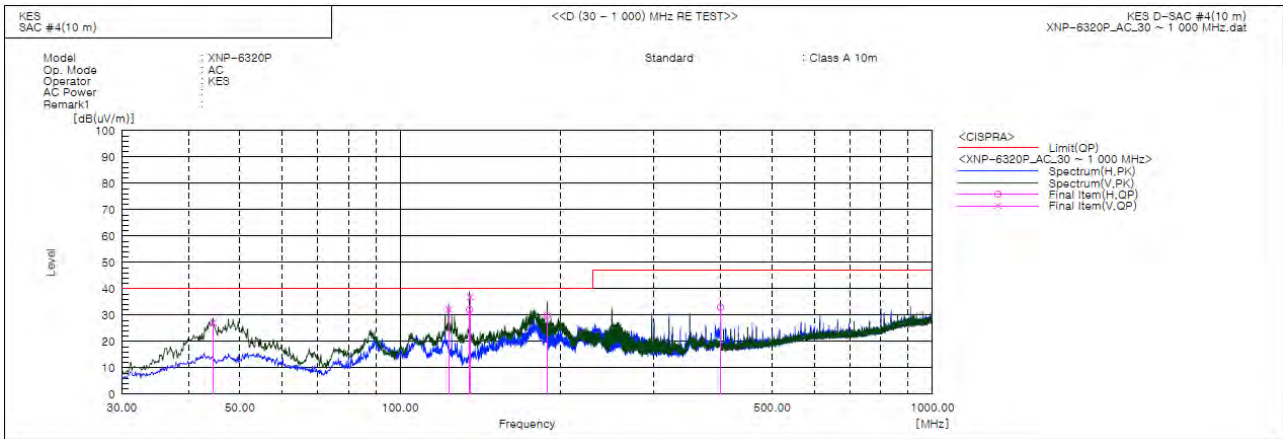
Corr. : Correction values (ISN FACTOR + (Cable Loss + Pulse Limiter FACTOR))

This report shall not be reproduced except in full, without the written approval of KES Co., Ltd.
The results shown in this test report refer only to the sample(s) tested unless otherwise stated.



Radiated Electric Field Emissions(Below 1 GHz)

■ AC 24 V Mode

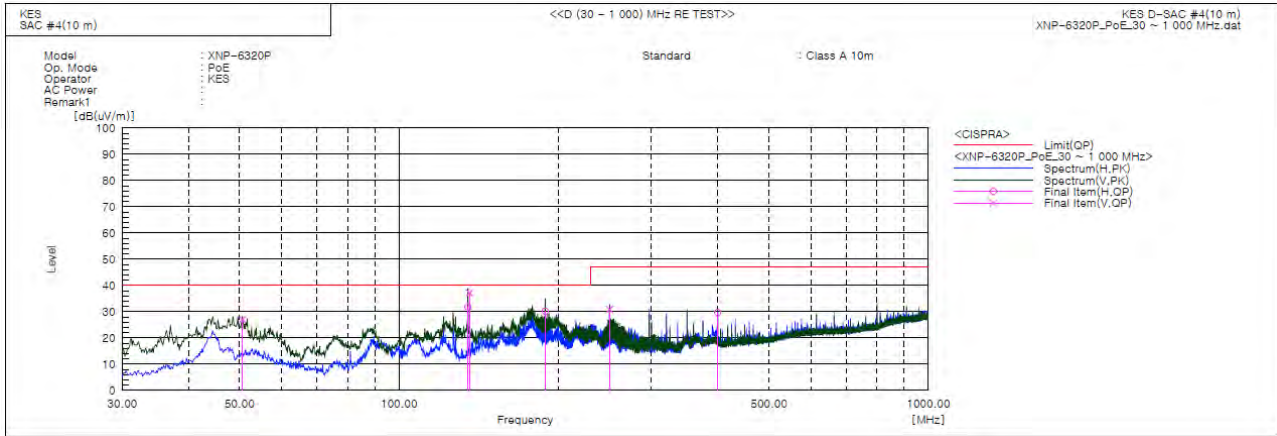


Final Result

No.	Frequency [MHz]	(P)	Reading QP [dB(uV)]	c.f [dB(1/m)]	Result QP [dB(uV/m)]	Limit QP [dB(uV/m)]	Margin QP [dB]	Height [cm]	Angle [deg]	Remark
1	44.550	V	55.1	-28.1	27.0	40.0	13.0	276.0	16.0	
2	123.363	V	63.6	-31.4	32.2	40.0	7.8	121.0	252.0	
3	135.003	H	64.0	-31.9	32.1	40.0	7.9	400.0	84.0	
4	135.436	V	68.8	-31.9	36.9	40.0	3.1	100.0	199.0	
5	188.959	H	58.0	-28.0	30.0	40.0	10.0	396.0	76.0	
6	400.055	H	53.4	-20.4	33.0	47.0	14.0	274.0	268.0	

This report shall not be reproduced except in full, without the written approval of KES Co., Ltd.
The results shown in this test report refer only to the sample(s) tested unless otherwise stated.

■ PoE Mode



Final Result

No.	Frequency [MHz]	(P)	Reading QP [dB(uV)]	c.f [dB(1/m)]	Result QP [dB(uV/m)]	Limit QP [dB(uV/m)]	Margin QP [dB]	Height [cm]	Angle [deg]	Remark
1	50.613	V	54.8	-27.8	27.0	40.0	13.0	119.0	106.0	
2	135.003	H	63.8	-31.9	31.9	40.0	8.1	400.0	85.0	
3	135.923	V	69.1	-31.9	37.2	40.0	2.8	100.0	194.0	
4	188.959	H	58.2	-28.0	30.2	40.0	9.8	379.0	73.0	
5	249.948	V	56.3	-25.4	30.9	47.0	16.1	100.0	218.0	
6	400.055	H	50.1	-20.4	29.7	47.0	17.3	365.0	279.0	

◆ Calculation

$$\text{Result(QP)} [\text{dB}(\mu\text{V}/\text{m})] = (\text{Reading(QP)} [\text{dB}(\mu\text{V})] + \text{c.f} [\text{dB}(1/\text{m})])$$

$$\text{Margin(QP)} [\text{dB}] = \text{Limit} [\text{dB}(\mu\text{V}/\text{m})] - \text{Result(QP)} [\text{dB}(\mu\text{V}/\text{m})]$$

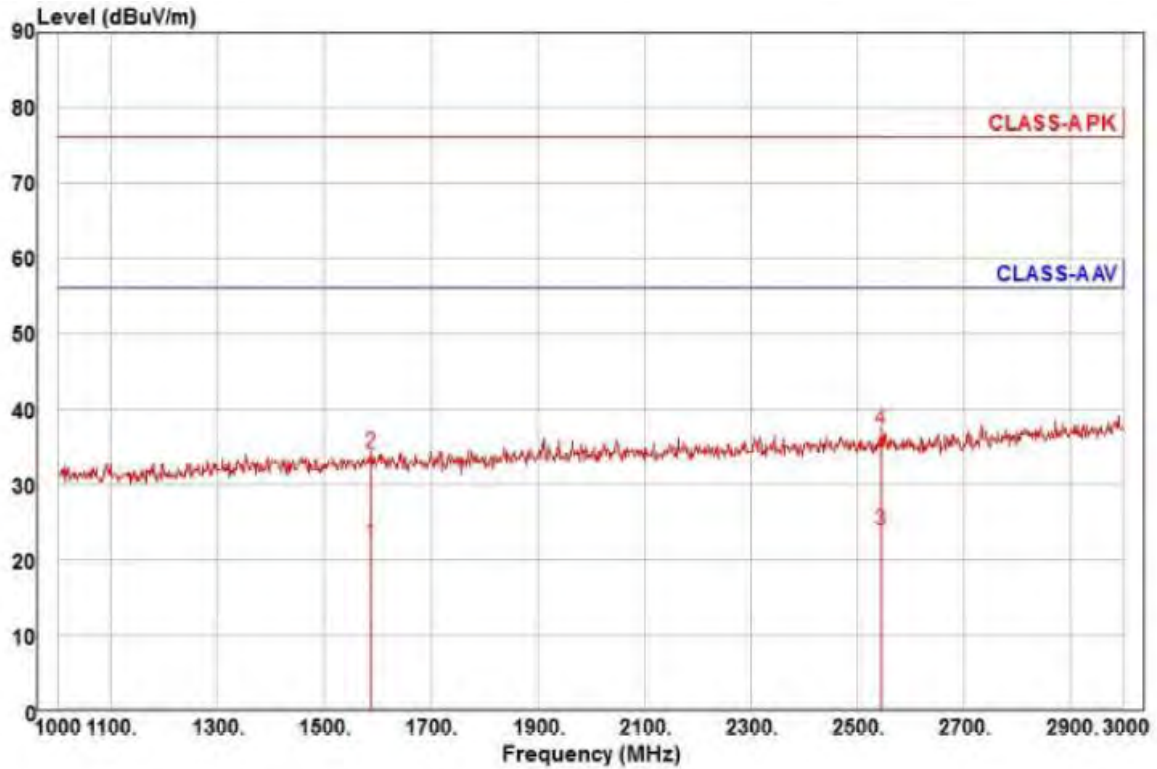
Reading(QP) : Reading value, Result(QP) : Reading value + Factor value

Limit(QP) : Limit value, c.f : (ANT Factor + Cable Loss - Preamp Factor), Margin: Margin value

This report shall not be reproduced except in full, without the written approval of KES Co., Ltd.
The results shown in this test report refer only to the sample(s) tested unless otherwise stated.

Radiated Electric Field Emissions(Above 1 GHz)

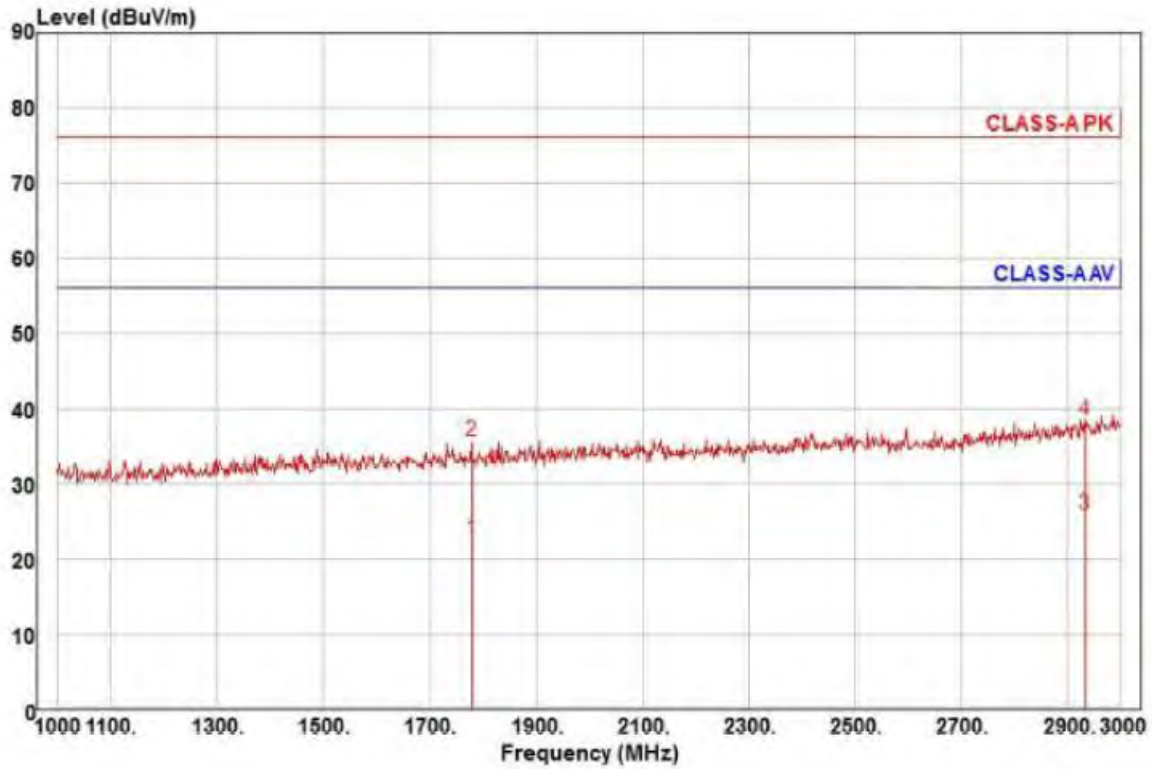
■ AC 24 V Mode



Site : YEOJU_C 3 m SAC
 Condition: CISPR22 CLASS-A PK 3m BBHA 9120D(RRA 2019-09-04) horizontal
 : RBW:1000.000kHz VBW:1000.000kHz SWT:Auto
 Project :
 Model : XNP-6320P
 Mode : AC
 Memo : 1 ~ 3 GHz

	Read Freq	Level	Ant Factor	Cable Loss	Preamp Factor	TPos	Limit	Over	Pol/Phase	Remark
	MHz	dBuV	dB/m	dB	dB	deg	dBuV/m	dB		
1	1588.00	23.58	25.67	8.47	35.54	52	56.00	-33.82	horizontal	Average
2	1588.00	35.56	25.67	8.47	35.54	52	76.00	-41.84	horizontal	Peak
3 pp	2546.00	21.05	27.33	10.94	35.38	201	56.00	-32.06	horizontal	Average
4 pk	2546.00	34.41	27.33	10.94	35.38	201	76.00	-38.70	horizontal	Peak

This report shall not be reproduced except in full, without the written approval of KES Co., Ltd.
 The results shown in this test report refer only to the sample(s) tested unless otherwise stated.



Site : YEOJU_C 3 m SAC
 Condition: CISPR22 CLASS-A PK 3m BBHA 9120D(RRA 2019-09-04) vertical
 : RBW:1000.000kHz VBW:1000.000kHz SWT:Auto
 Project :
 Model : XNP-6320P
 Mode : AC
 Memo : 1 ~ 3 GHz

	Read Freq	Ant Level	Ant Factor	Cable Loss	Preamp Factor	TPos deg	Limit dBuV/m	Over Limit	Pol/Phase	Remark
	MHz	dBuV	dB/m	dB	dB	deg	dBuV/m	dB		
1	1778.00	23.03	25.90	9.03	35.37	341	56.00	-33.41	vertical	Average
2	1778.00	36.20	25.90	9.03	35.37	341	76.00	-40.24	vertical	Peak
3 pp	2934.00	21.09	28.34	11.97	35.53	4	56.00	-30.13	vertical	Average
4 pk	2934.00	33.68	28.34	11.97	35.53	4	76.00	-37.54	vertical	Peak

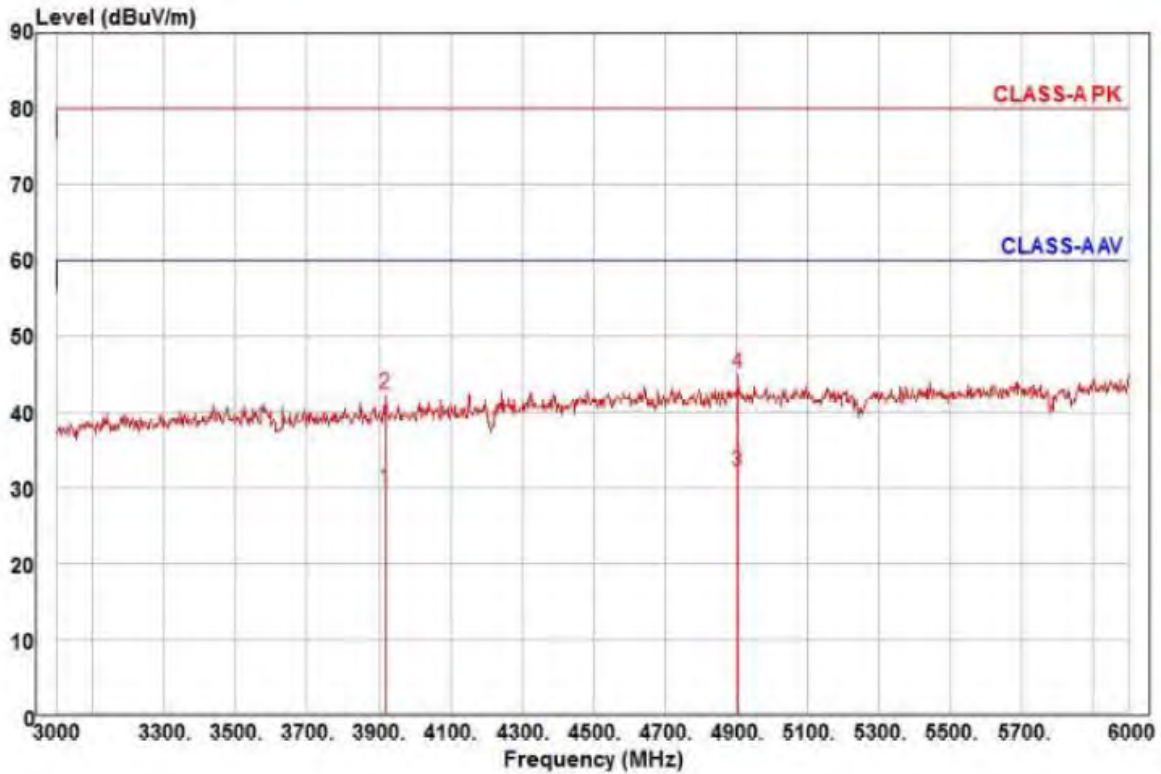
This report shall not be reproduced except in full, without the written approval of KES Co., Ltd.
 The results shown in this test report refer only to the sample(s) tested unless otherwise stated.



KES Co., Ltd.

C-3701, Simin-daero 365-40,
 Dongan-gu, Anyang-si, Gyeonggi-do, 14057, Korea
 Tel: +82-31-425-6200 / Fax: +82-31-424-0450
 www.kes.co.kr

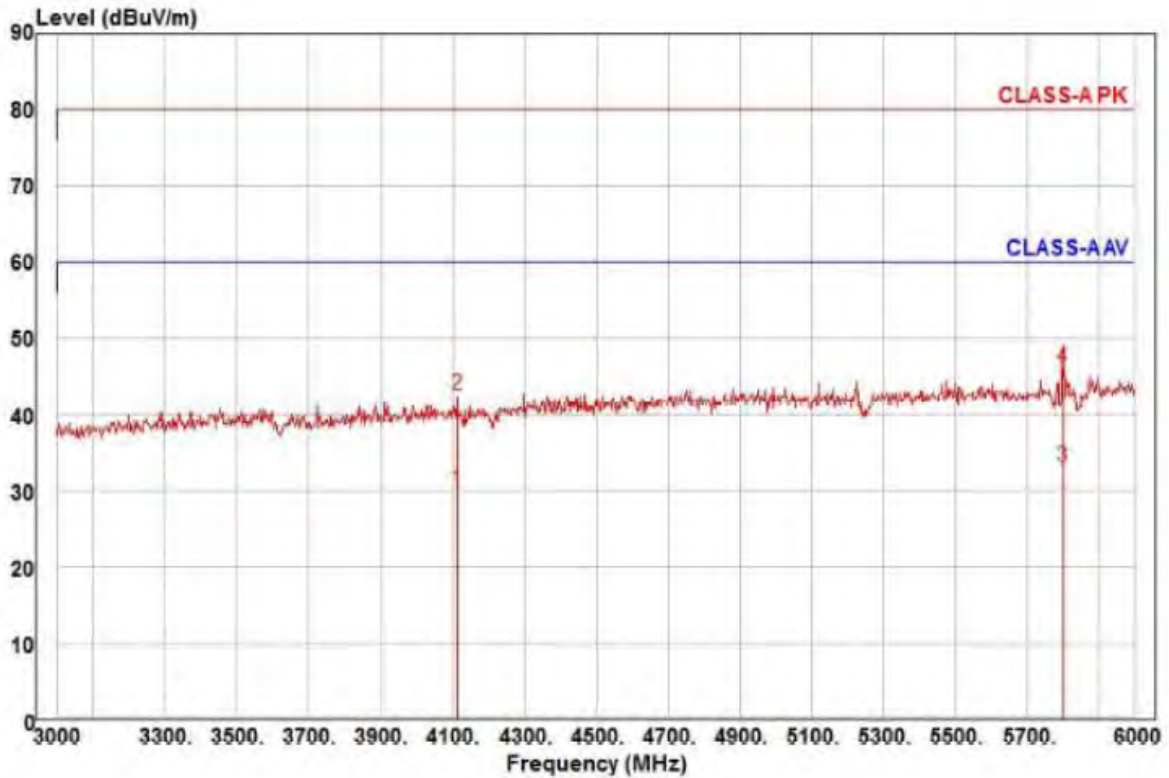
Test report No.:
 KES-E1-17T0813
 Page (29) of (48)



Site : YEOJU_C 3 m SAC
 Condition: CISPR22 CLASS-A PK 3m BBHA 9120D(RRA 2019-09-04) horizontal
 : RBW:1000.000kHz VBW:1000.000kHz SWT:Auto
 Project :
 Model : XNP-6320P
 Mode : AC
 Memo : 3 ~ 6 GHz

	Read Freq	Level	Ant Factor	Cable Loss	Preamp Factor	TPos	Limit Line	Over Limit	Pol/Phase	Remark
	MHz	dBuV	dB/m	dB	dB	deg	dBuV/m	dB		
1	3918.00	21.49	29.67	13.89	35.30	143	60.00	-30.25	horizontal	Average
2	3918.00	34.11	29.67	13.89	35.30	143	80.00	-37.63	horizontal	Peak
3 pp	4908.00	20.76	31.37	15.65	35.60	141	60.00	-27.82	horizontal	Average
4 pk	4908.00	33.62	31.37	15.65	35.60	141	80.00	-34.96	horizontal	Peak

This report shall not be reproduced except in full, without the written approval of KES Co., Ltd.
 The results shown in this test report refer only to the sample(s) tested unless otherwise stated.

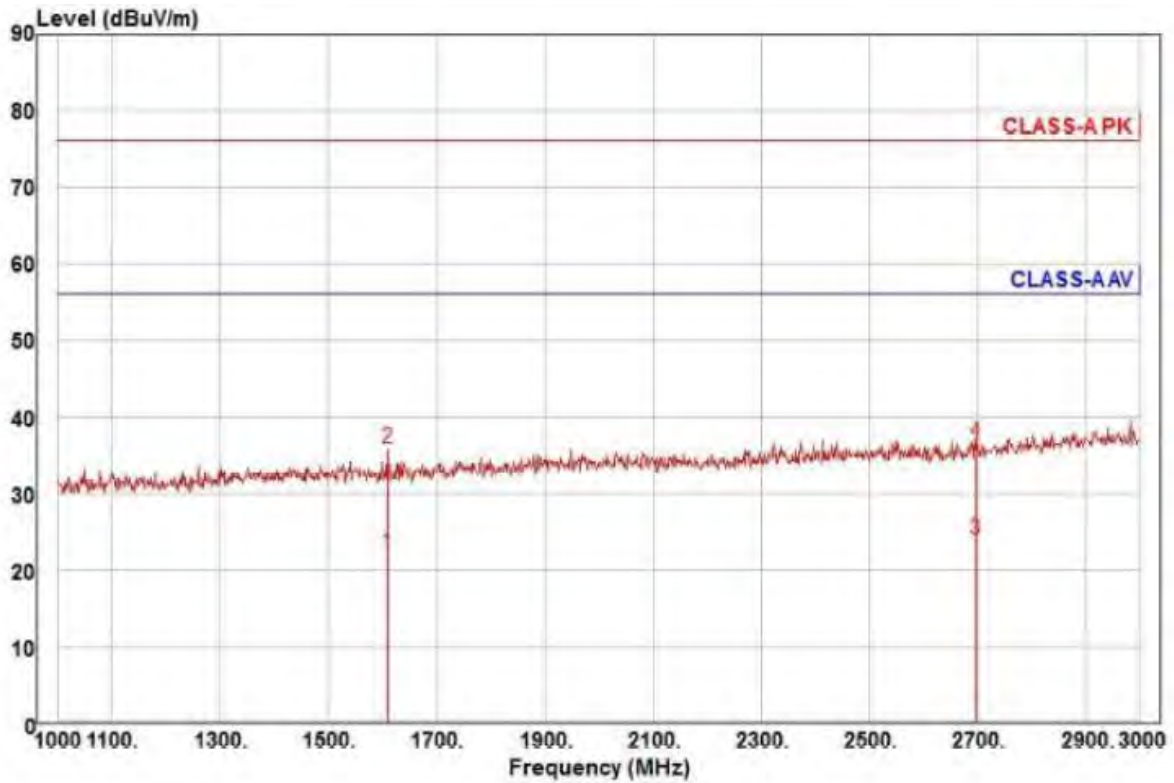


Site : YEOJU_C 3 m SAC
 Condition: CISPR22 CLASS-A PK 3m BBHA 9120D(RRA 2019-09-04) vertical
 : RBW:1000.000kHz VBW:1000.000kHz SWT:Auto
 Project :
 Model : XNP-6320P
 Mode : AC
 Memo : 3 ~ 6 GHz

	Read Freq	Level	Ant Factor	Cable Loss	Preamp Factor	TPos	Limit Line	Over Limit	Pol/Phase	Remark
	MHz	dBuV	dB/m	dB	dB	deg	dBuV/m	dB		
1	4113.00	21.10	30.07	14.26	35.32	223	60.00	-29.89	vertical	Average
2	4113.00	33.63	30.07	14.26	35.32	223	80.00	-37.36	vertical	Peak
3 pp	5802.00	19.53	32.27	17.05	35.68	127	60.00	-26.83	vertical	Average
4 pk	5802.00	32.44	32.27	17.05	35.68	127	80.00	-33.92	vertical	Peak

This report shall not be reproduced except in full, without the written approval of KES Co., Ltd.
 The results shown in this test report refer only to the sample(s) tested unless otherwise stated.

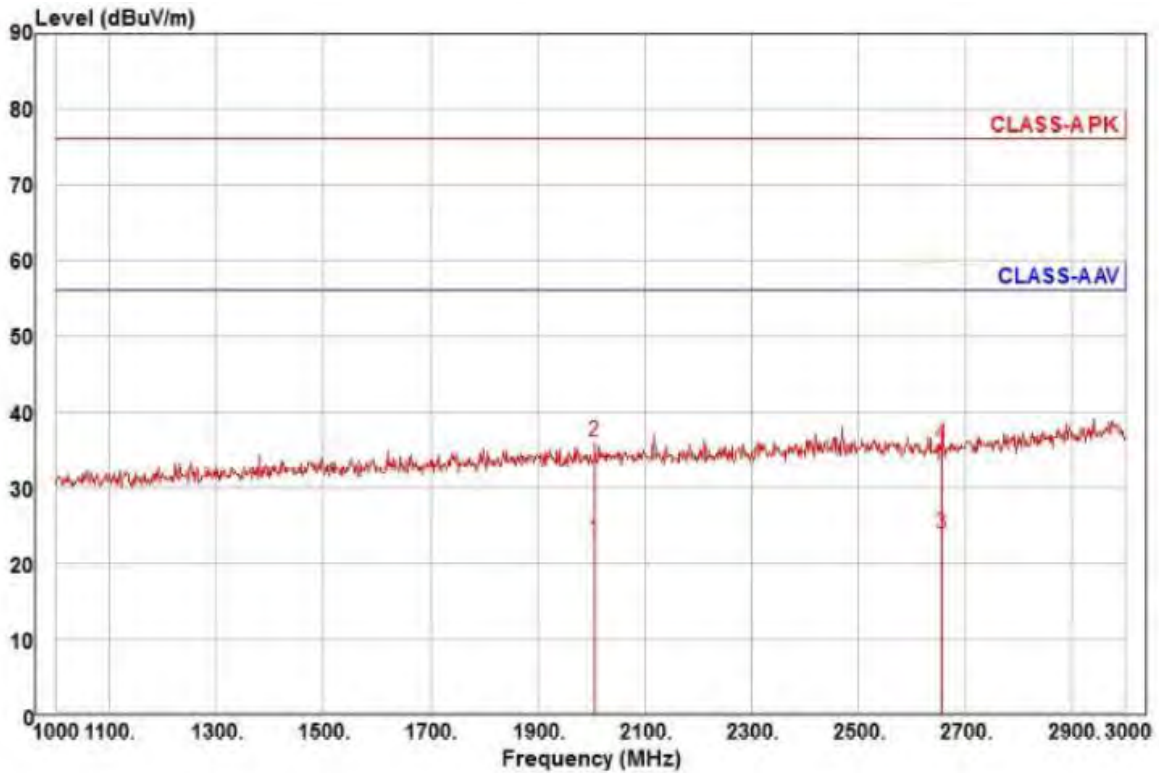
■ PoE Mode



Site : YEOJU_C 3 m SAC
 Condition: CISPR22 CLASS-A PK 3m BBHA 9120D(RRA 2019-09-04) horizontal
 : RBW:1000.000kHz VBW:1000.000kHz SWT:Auto
 Project :
 Model : XNP-6320P
 Mode : PoE
 Memo : 1 ~ 3 GHz

	Read Freq	Level	Ant Factor	Cable Loss	Preamp Factor	TPos	Limit Line	Over Limit	Pol/Phase	Remark
	MHz	dBuV	dB/m	dB	dB	deg	dBuV/m	dB		
1	1610.00	23.54	25.70	8.54	35.52	360	56.00	-33.74	horizontal	Average
2	1610.00	37.08	25.70	8.54	35.52	360	76.00	-40.20	horizontal	Peak
3 pp	2698.00	20.25	27.72	11.33	35.44	121	56.00	-32.14	horizontal	Average
4 pk	2698.00	33.05	27.72	11.33	35.44	121	76.00	-39.34	horizontal	Peak

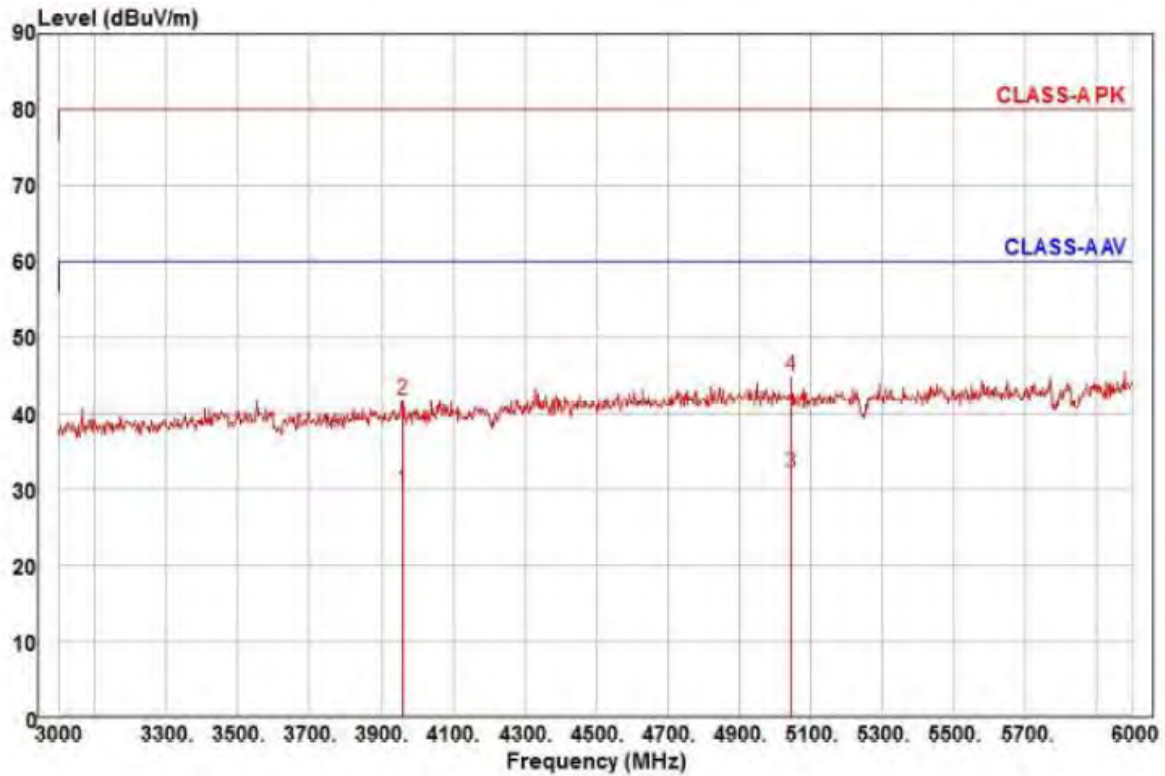
This report shall not be reproduced except in full, without the written approval of KES Co., Ltd.
 The results shown in this test report refer only to the sample(s) tested unless otherwise stated.



Site : YEOJU_C 3 m SAC
 Condition: CISPR22 CLASS-A PK 3m BBHA 9120D(RRA 2019-09-04) vertical
 : RBW:1000.000kHz VBW:1000.000kHz SWT:Auto
 Project :
 Model : XNP-6320P
 Mode : PoE
 Memo : 1 ~ 3 GHz

	Read Freq	Level	Ant Factor	Cable Loss	Preamp Factor	TPos	Limit Line	Over Limit	Pol/Phase	Remark
	MHz	dBuV	dB/m	dB	dB	deg	dBuV/m	dB		
1	2008.00	22.47	26.18	9.67	35.17	134	56.00	-32.85	vertical	Average
2 pk	2008.00	35.34	26.18	9.67	35.17	134	76.00	-39.98	vertical	Peak
3 pp	2658.00	20.44	27.62	11.22	35.43	195	56.00	-32.15	vertical	Average
4	2658.00	32.20	27.62	11.22	35.43	195	76.00	-40.39	vertical	Peak

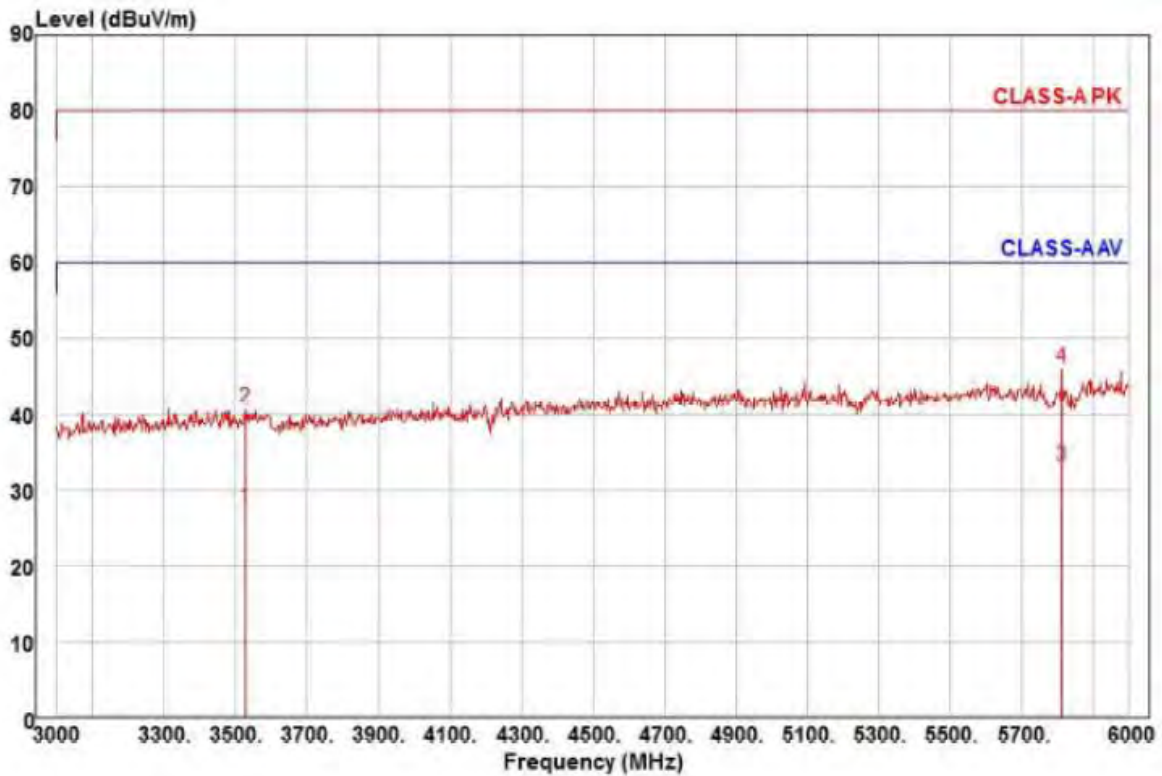
This report shall not be reproduced except in full, without the written approval of KES Co., Ltd.
 The results shown in this test report refer only to the sample(s) tested unless otherwise stated.



Site : YEOJU_C 3 m SAC
 Condition: CISPR22 CLASS-A PK 3m BBHA 9120D(RRA 2019-09-04) horizontal
 : RBW:1000.000kHz VBW:1000.000kHz SWT:Auto
 Project :
 Model : XNP-6320P
 Mode : PoE
 Memo : 3 ~ 6 GHz

	Read Freq	Ant Level	Ant Factor	Cable Loss	Preamp Factor	TPos	Limit Line	Over Limit	Pol/Phase	Remark
	MHz	dBuV	dB/m	dB	dB	deg	dBuV/m	dB		
1	3960.00	21.41	29.75	13.98	35.29	189	60.00	-30.15	horizontal	Average
2	3960.00	33.26	29.75	13.98	35.29	189	80.00	-38.30	horizontal	Peak
3 pp	5049.00	20.48	31.51	15.84	35.63	334	60.00	-27.80	horizontal	Average
4 pk	5049.00	33.12	31.51	15.84	35.63	334	80.00	-35.16	horizontal	Peak

This report shall not be reproduced except in full, without the written approval of KES Co., Ltd.
 The results shown in this test report refer only to the sample(s) tested unless otherwise stated.



Site : YEOJU_C 3 m SAC
 Condition: CISPR22 CLASS-A PK 3m BBHA 9120D(RRA 2019-09-04) vertical
 : RBW:1000.000kHz VBW:1000.000kHz SWT:Auto
 Project :
 Model : XNP-6320P
 Mode : PoE
 Memo : 3 ~ 6 GHz

	Read Freq	Read Level	Ant Factor	Cable Loss	Preamp Factor	TPos	Limit Line	Over Limit	Pol/Phase	Remark
	MHz	dBuV	dB/m	dB	dB	deg	dBuV/m	dB		
1	3528.00	21.04	28.92	13.18	35.41	161	60.00	-32.27	vertical	Average
2	3528.00	34.13	28.92	13.18	35.41	161	80.00	-39.18	vertical	Peak
3 pp	5814.00	19.47	32.29	17.09	35.68	231	60.00	-26.83	vertical	Average
4 pk	5814.00	32.35	32.29	17.09	35.68	231	80.00	-33.95	vertical	Peak

◆ Calculation

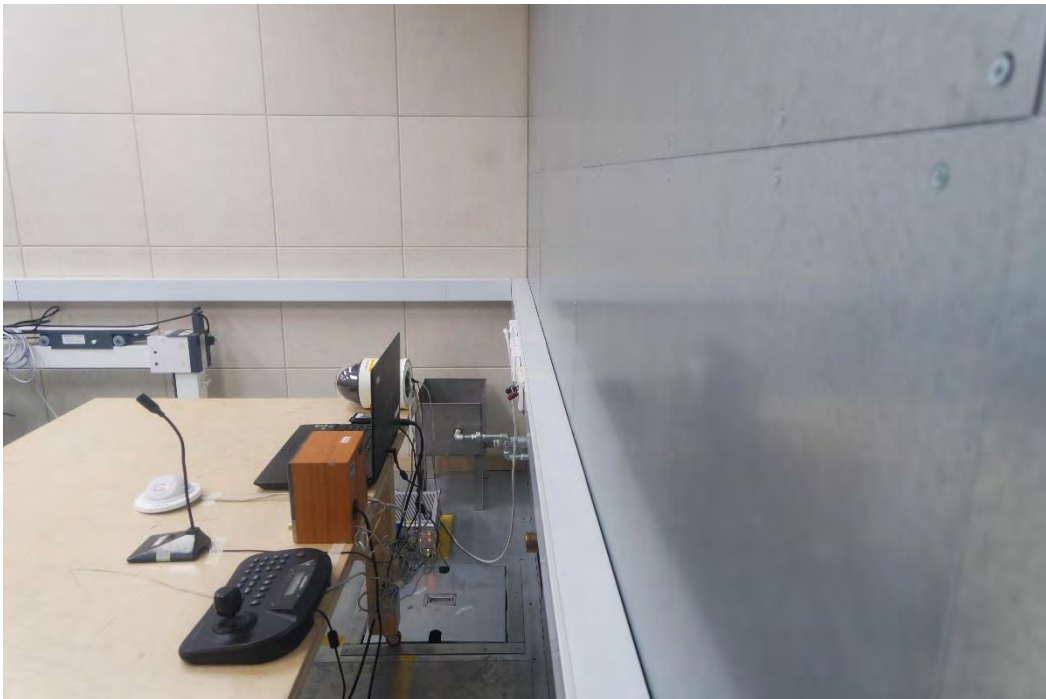
$$\text{Over Limit [dB]} = (\text{Read Level[dBuV]} + \text{Ant Factor[dB/m]} + \text{Cable Loss [dB]} - \text{Preamp Factor [dB]}) - \text{Limit Line[dBuV]}$$

Over Limit : Margin, Read Level : Reading value, Ant Factor : ANT Factor,
 Cable Loss : Cable loss, Preamp Factor : Preamp Factor

This report shall not be reproduced except in full, without the written approval of KES Co., Ltd.
 The results shown in this test report refer only to the sample(s) tested unless otherwise stated.

Test Setup Photos and Configuration

Conducted Voltage Emissions



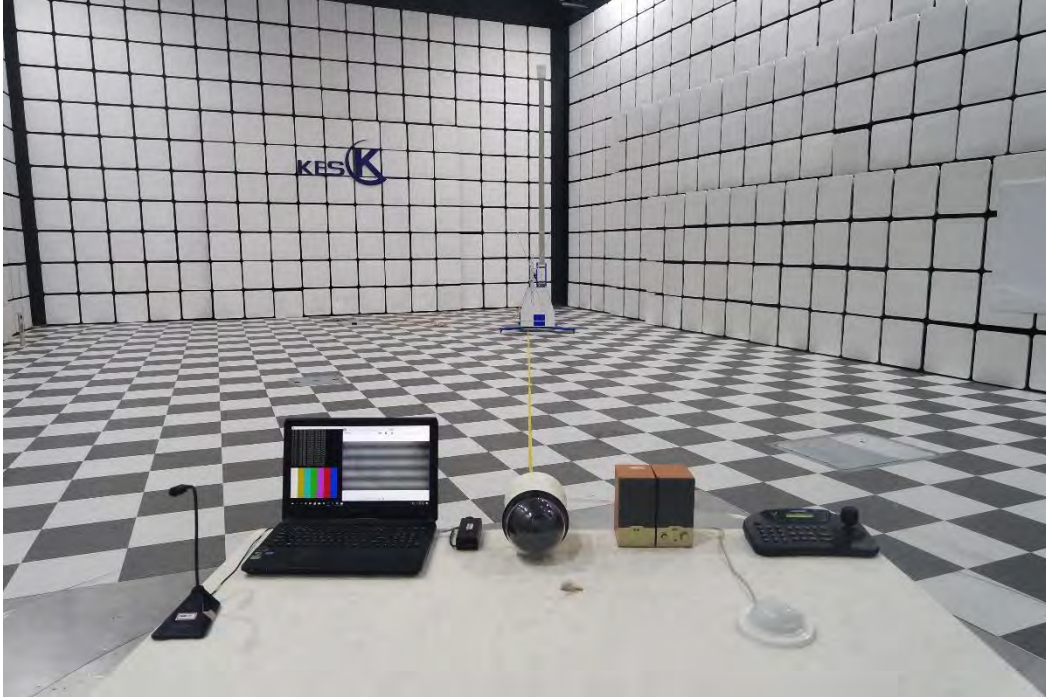
This report shall not be reproduced except in full, without the written approval of KES Co., Ltd.
The results shown in this test report refer only to the sample(s) tested unless otherwise stated.

Conducted Telecommunication Emissions



This report shall not be reproduced except in full, without the written approval of KES Co., Ltd.
The results shown in this test report refer only to the sample(s) tested unless otherwise stated.

Radiated Electric Field Emissions(Below 1 GHz)



This report shall not be reproduced except in full, without the written approval of KES Co., Ltd.
The results shown in this test report refer only to the sample(s) tested unless otherwise stated.

Radiated Electric Field Emissions(Above 1 GHz)



This report shall not be reproduced except in full, without the written approval of KES Co., Ltd.
The results shown in this test report refer only to the sample(s) tested unless otherwise stated.

EUT External Photographs

(Top)



(Bottom)



This report shall not be reproduced except in full, without the written approval of KES Co., Ltd.
The results shown in this test report refer only to the sample(s) tested unless otherwise stated.

EUT Internal Photographs

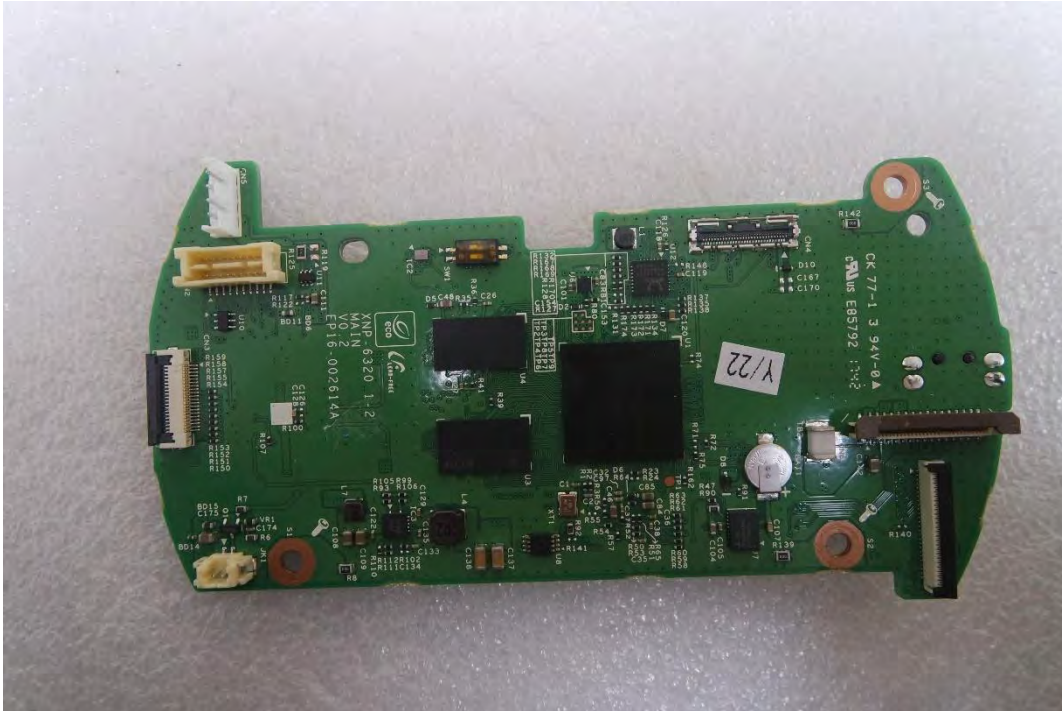
(Internal View)



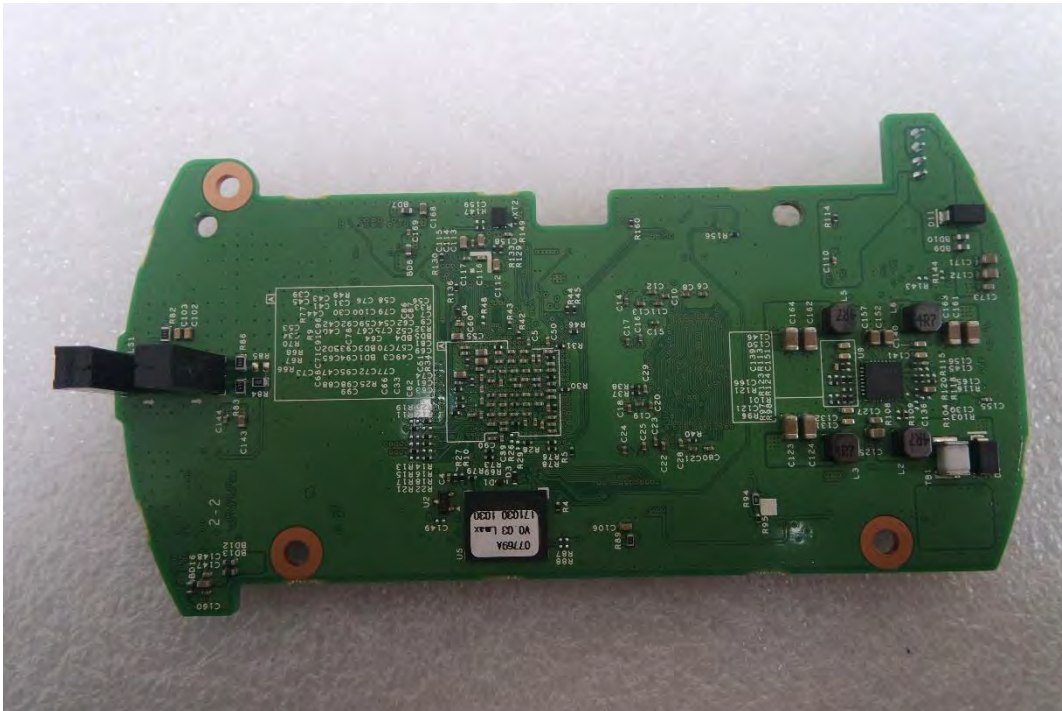
This report shall not be reproduced except in full, without the written approval of KES Co., Ltd.
The results shown in this test report refer only to the sample(s) tested unless otherwise stated.

EUT Internal View – Main board

(Top)



(Bottom)



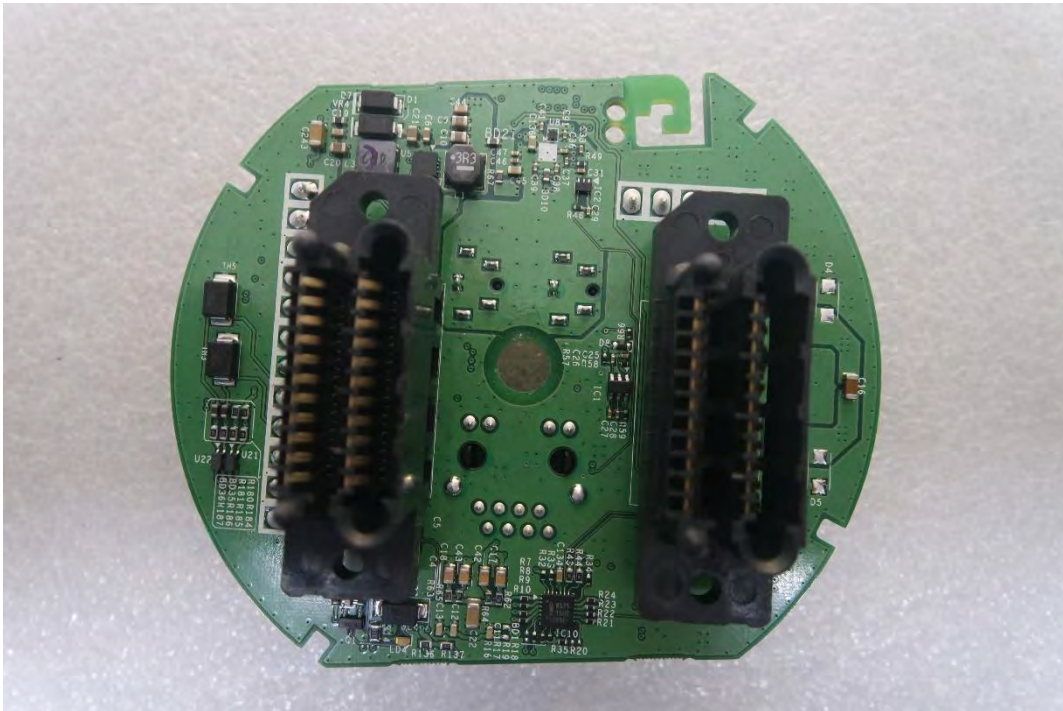
This report shall not be reproduced except in full, without the written approval of KES Co., Ltd.
 The results shown in this test report refer only to the sample(s) tested unless otherwise stated.

EUT Internal View – Interface board

(Top)



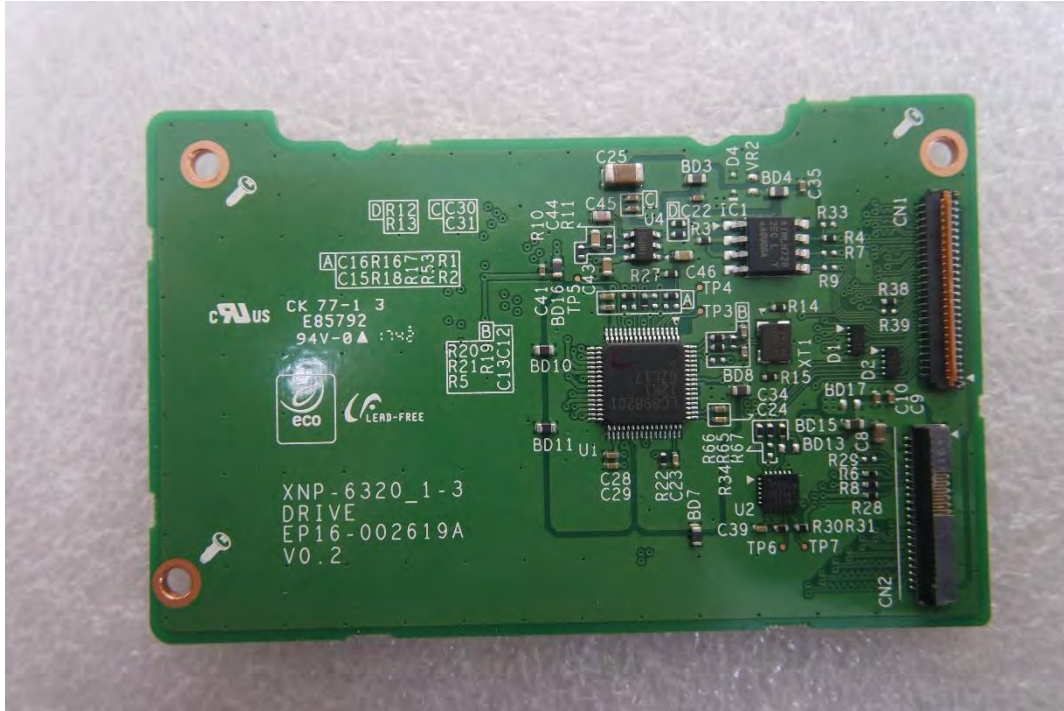
(Bottom)



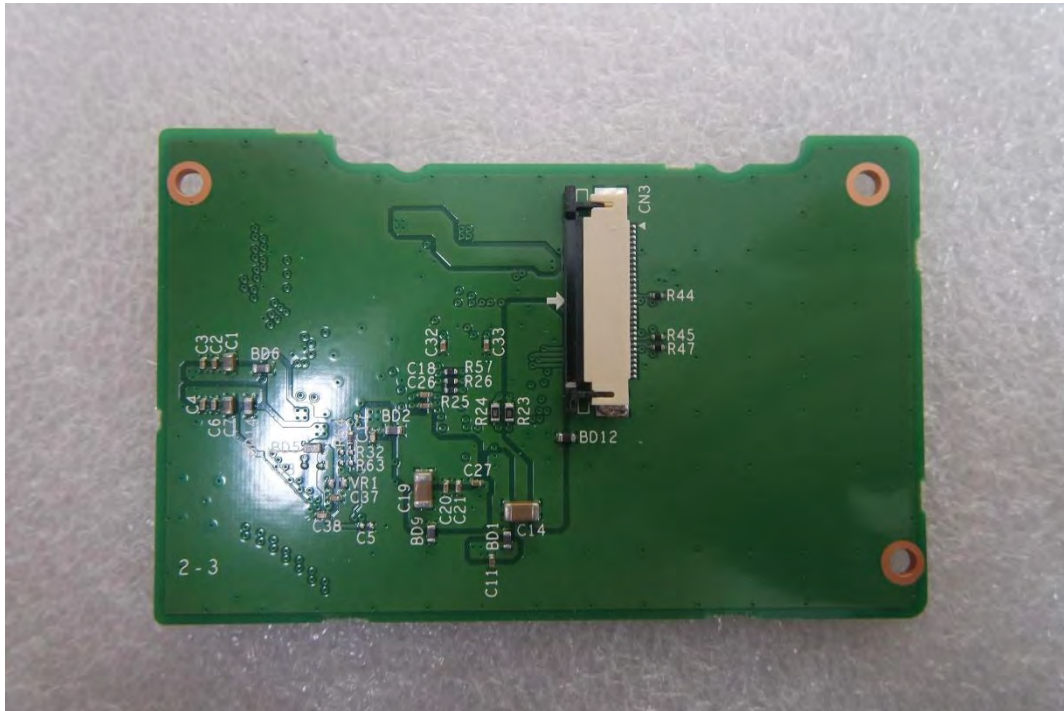
This report shall not be reproduced except in full, without the written approval of KES Co., Ltd.
The results shown in this test report refer only to the sample(s) tested unless otherwise stated.

EUT Internal View – Drive board

(Top)



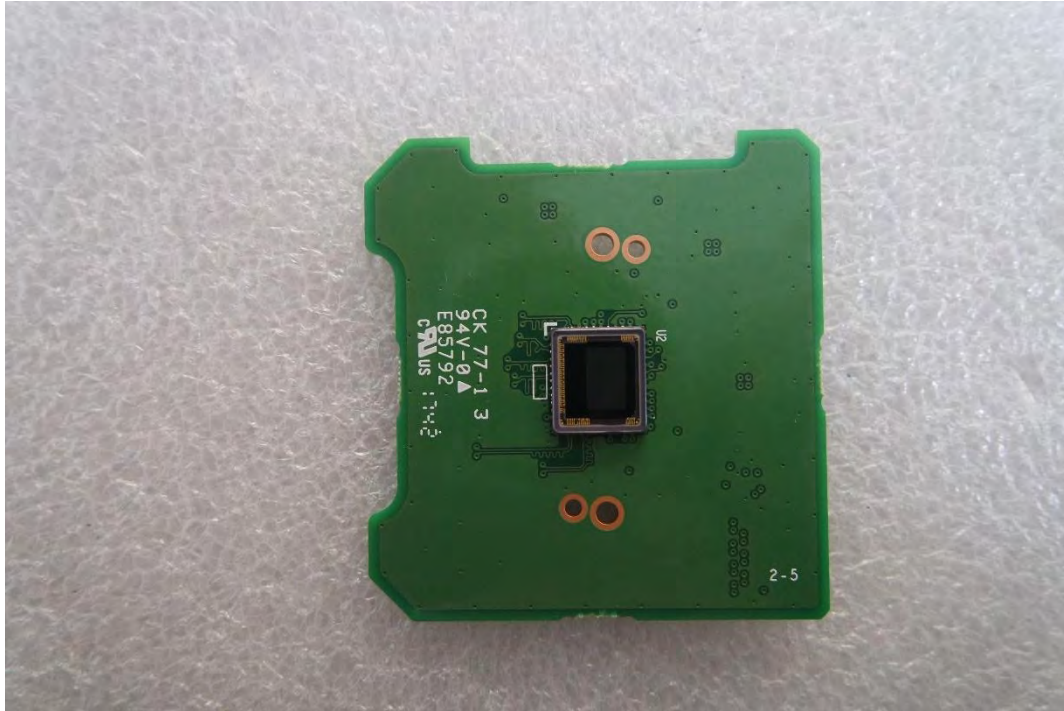
(Bottom)



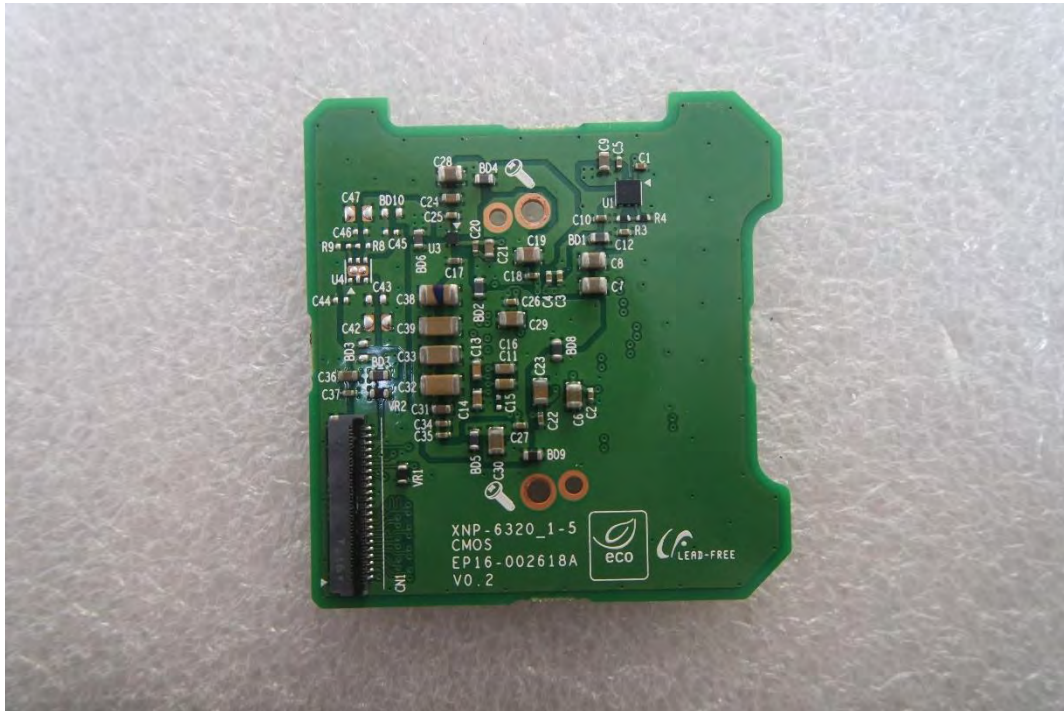
This report shall not be reproduced except in full, without the written approval of KES Co., Ltd.
 The results shown in this test report refer only to the sample(s) tested unless otherwise stated.

EUT Internal View – CCD board

(Top)



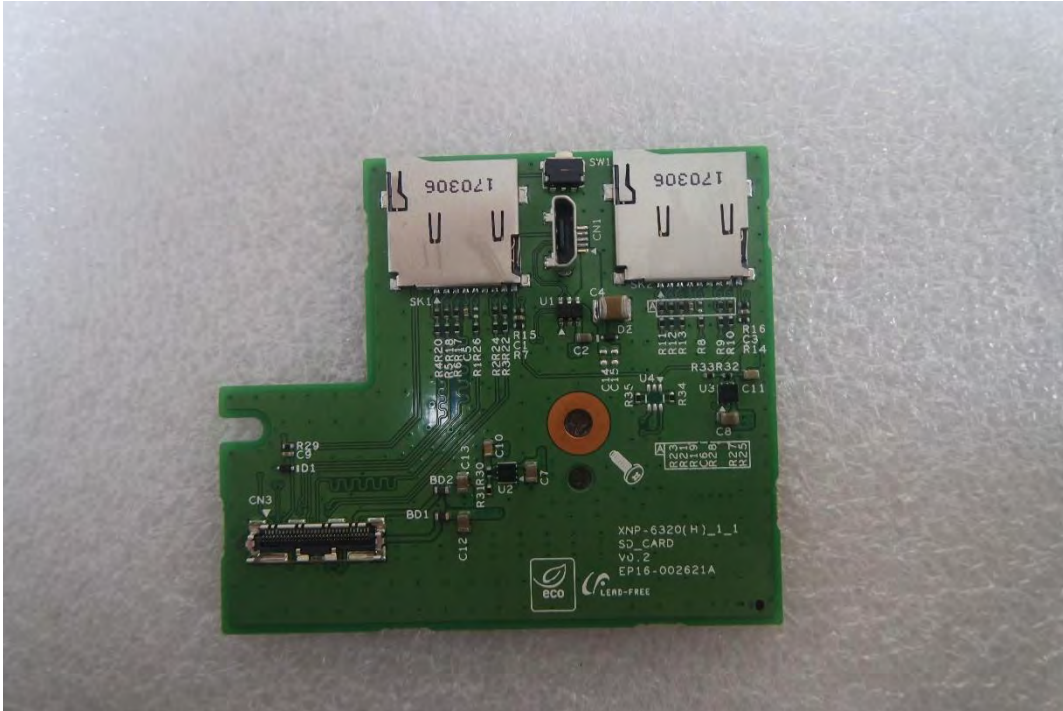
(Bottom)



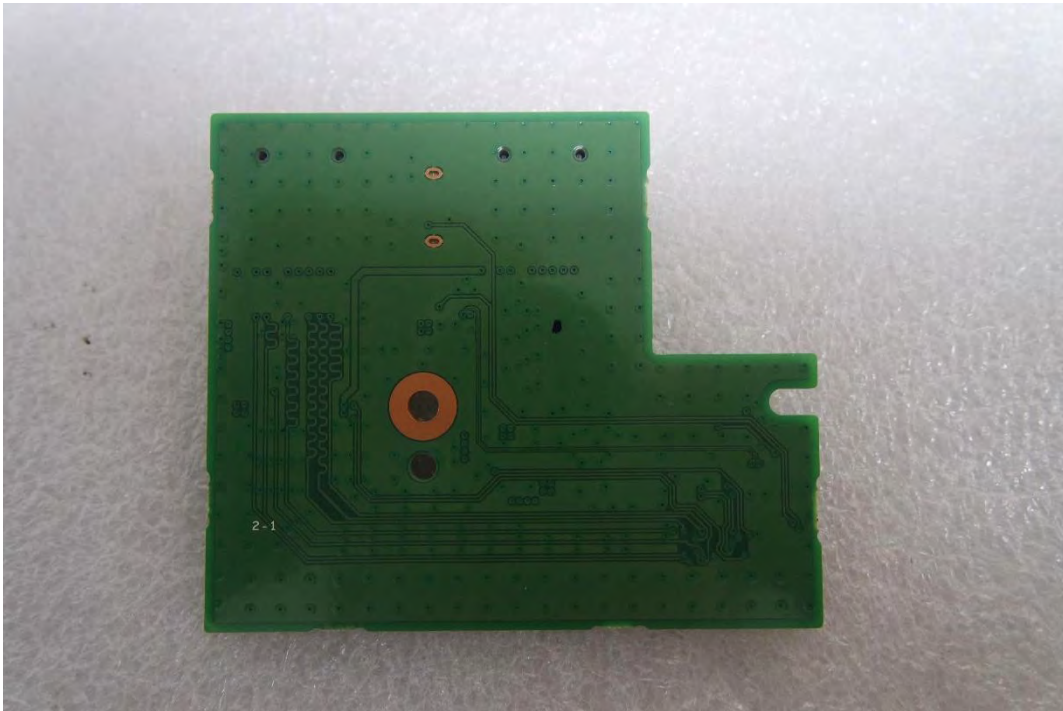
This report shall not be reproduced except in full, without the written approval of KES Co., Ltd.
The results shown in this test report refer only to the sample(s) tested unless otherwise stated.

EUT Internal View – SD board

(Top)



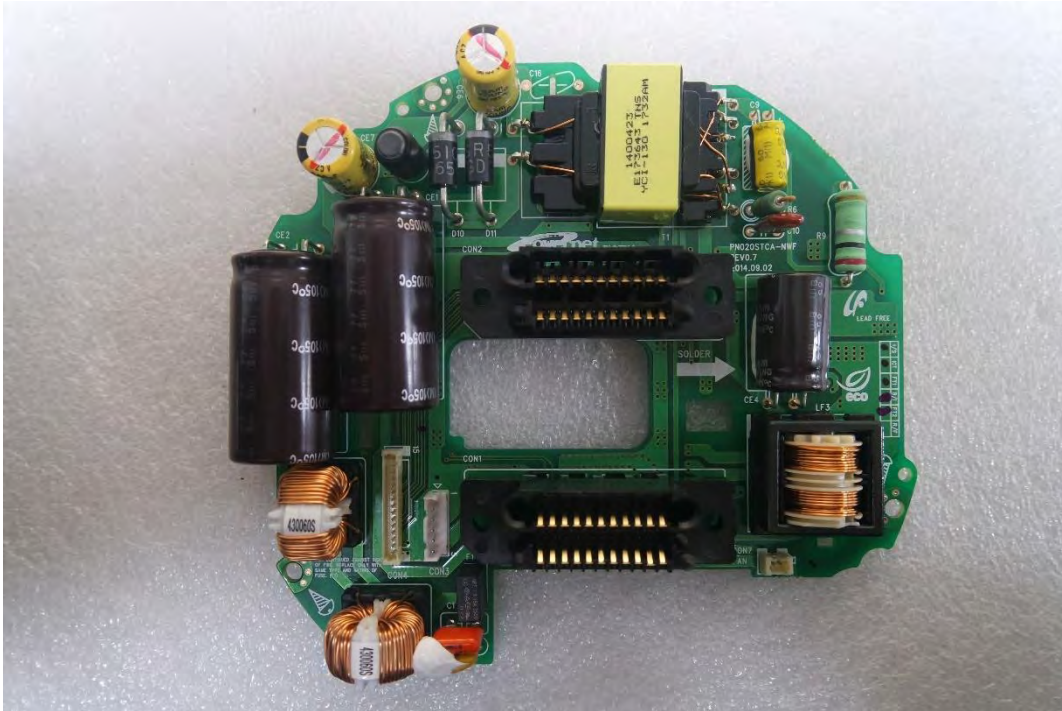
(Bottom)



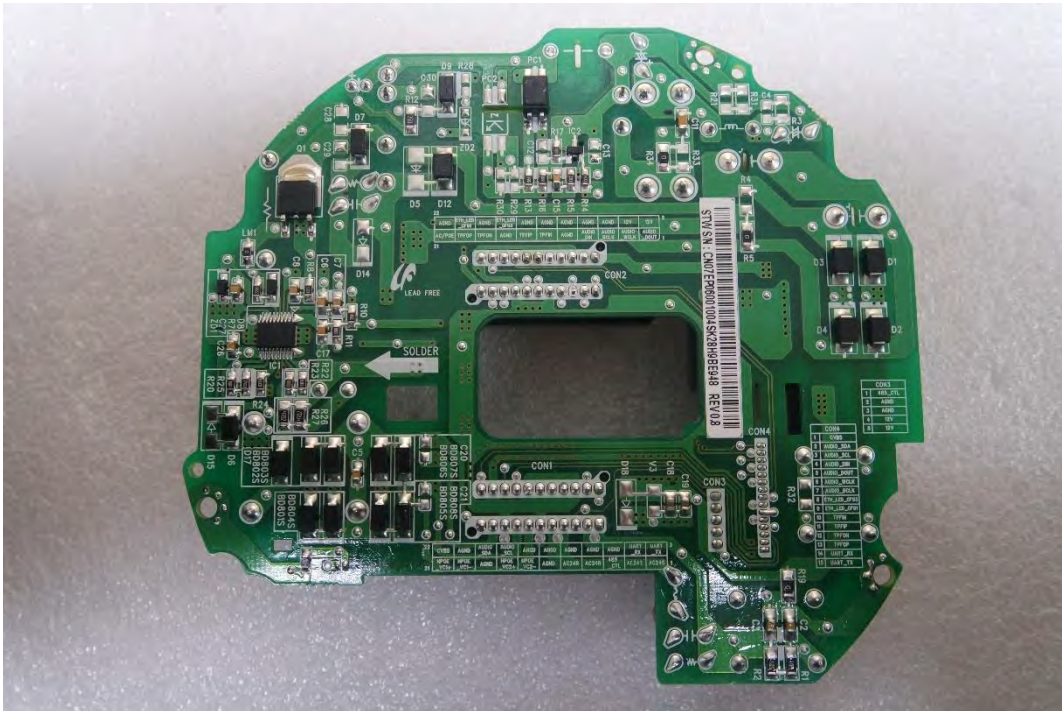
This report shall not be reproduced except in full, without the written approval of KES Co., Ltd.
 The results shown in this test report refer only to the sample(s) tested unless otherwise stated.

EUT Internal View – Power board

(Top)



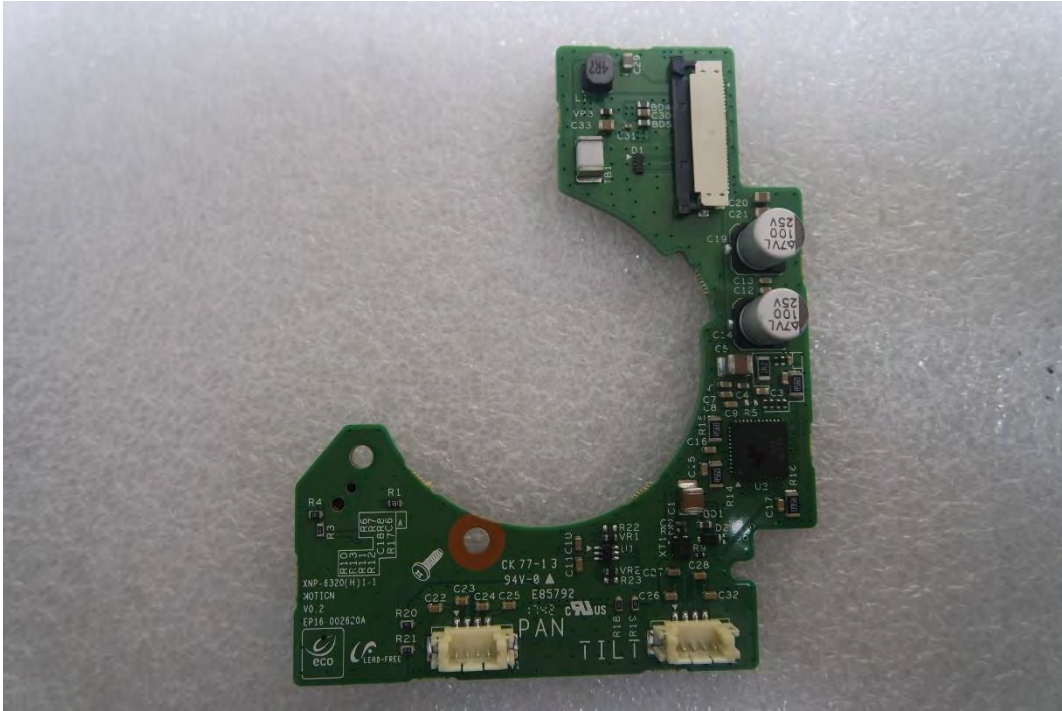
(Bottom)



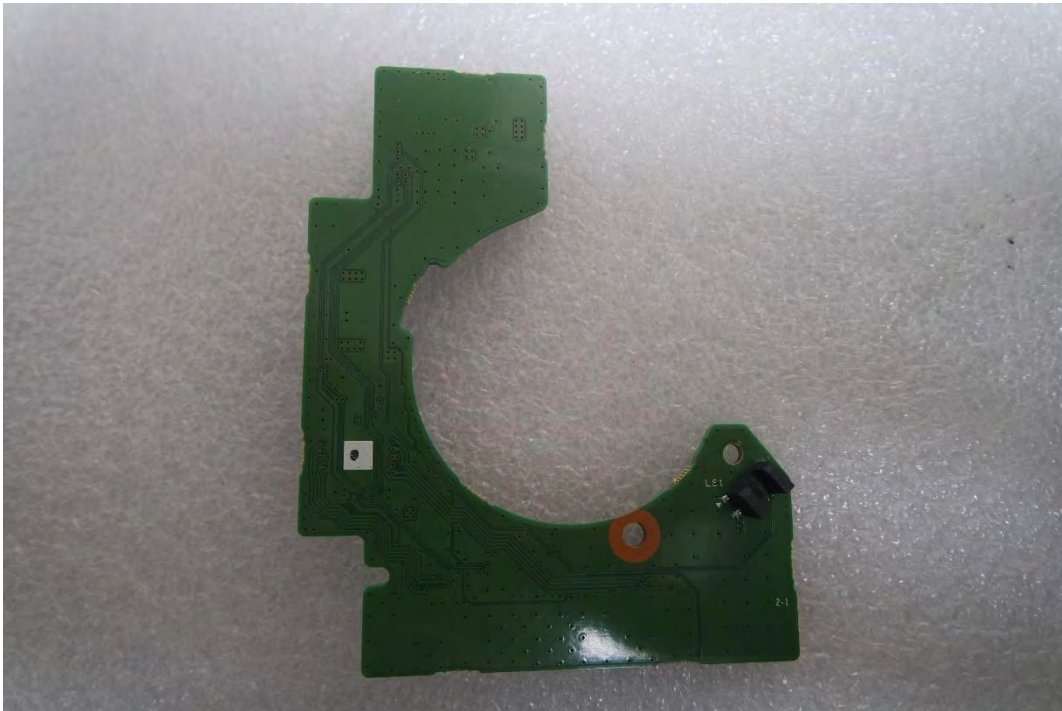
This report shall not be reproduced except in full, without the written approval of KES Co., Ltd.
The results shown in this test report refer only to the sample(s) tested unless otherwise stated.

EUT Internal View – TILT board

(Top)



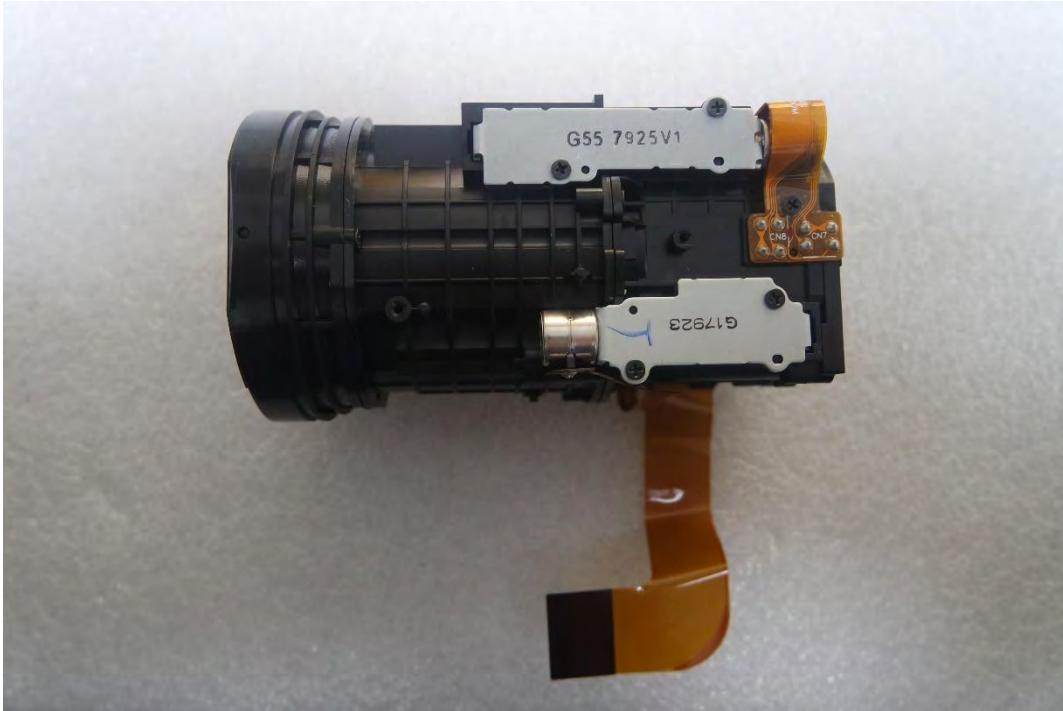
(Bottom)



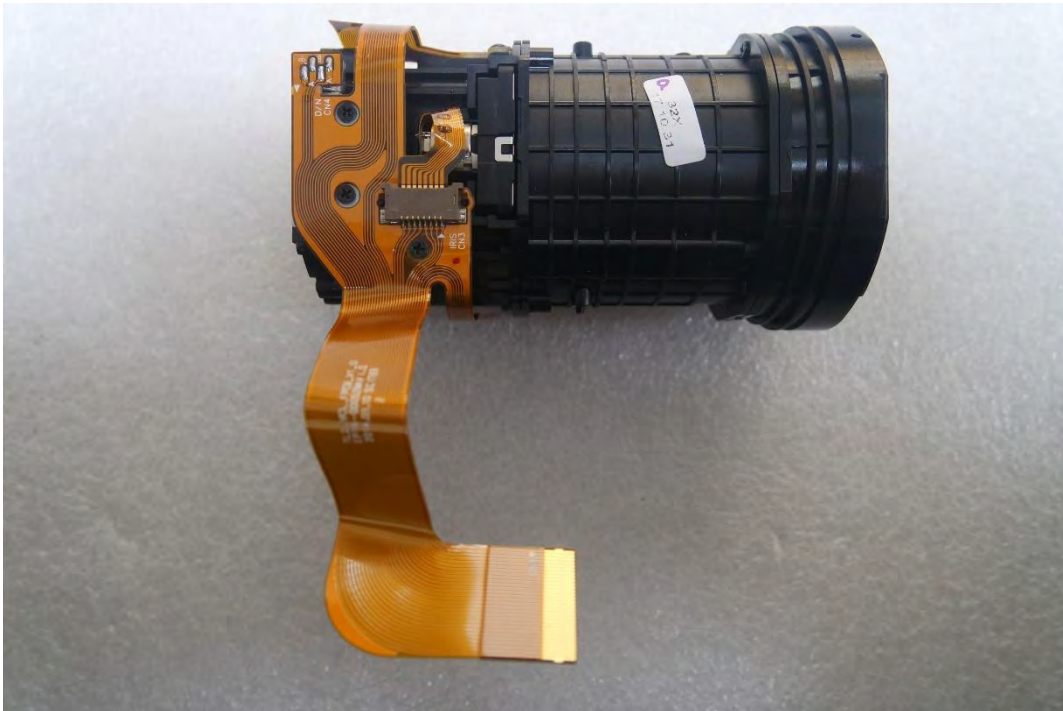
This report shall not be reproduced except in full, without the written approval of KES Co., Ltd.
The results shown in this test report refer only to the sample(s) tested unless otherwise stated.

EUT Internal View – Lens Module

(Top)



(Bottom)



This report shall not be reproduced except in full, without the written approval of KES Co., Ltd.
The results shown in this test report refer only to the sample(s) tested unless otherwise stated.